

MICHIGAN
DEPARTMENT OF CONSERVATION
FORESTRY DIVISION

LAND CORNER RECORD

T. 37 N N.R. 3-4W

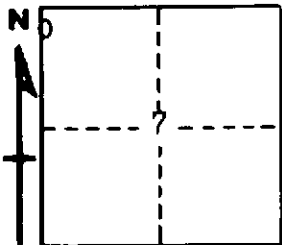
Cheboygan COUNTY

DESCRIPTION OF CORNER N 1/8 Corner common to Sections 7 and 12

CORNER MONUMENT 1" x 24" Pipe

DATE MONUMENT PLACED AND WITNESSED February 22, 1962

WITNESSES TO CORNER.....



7" Tamarack S 77 E 16.4'

12" Cedar S 21 W 6.5

AND

CIRCLE CORNER REGISTERED

DESCRIPTION IN DETAIL AS TO HOW CORNER WAS LOCATED AND IDENTIFIED OR RESTORED.

This corner was set midpoint on line between section corners North and 1/4 Corner South while making a survey of Section 7.

SURVEYOR'S SEAL

SIGNED *Kenneth J. Bethany* DATE March 6, 1962
REGISTERED LAND SURVEYOR