

MICHIGAN
DEPARTMENT OF CONSERVATION
FORESTRY DIVISION

LAND CORNER RECORD

T. 38 N. R. 2 W

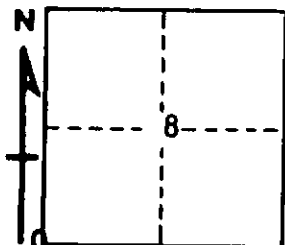
Cheboygan COUNTY

DESCRIPTION OF CORNER Sec corner common to sections 7, 8, 17, 18

CORNER MONUMENT Set 1" pipe with 4" aluminum cap

DATE MONUMENT PLACED AND WITNESSED July 15, 1965

WITNESSES TO CORNER.....



7" B. Ash - N 32 E - 29.1

10" Cedar - S 23 E - 43.8

AND

CIRCLE CORNER REGISTERED

DESCRIPTION IN DETAIL AS TO HOW CORNER WAS LOCATED AND IDENTIFIED OR RESTORED.

This corner was set by double proportionate measurement between section corners 1 mile north, south, east and west. Unable to locate anything for U.S. evidence. Found an old post about 75 links south and 25 links east but could find no support for this position by measurements to other corners.

SURVEYOR'S SEAL

SIGNED

Kenneth H. Ostling
REGISTERED LAND SURVEYOR #10068

DATE October 19, 1965