

MICHIGAN
DEPARTMENT OF CONSERVATION
FORESTRY DIVISION

LAND CORNER RECORD

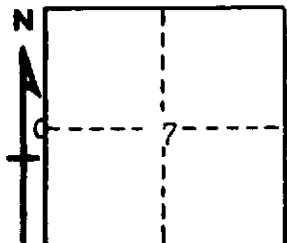
T. 38 N.R. 2 W.
T. 38 N.R. 3 W. Cheboygan COUNTY

DESCRIPTION OF CORNER 1/4 corner common to Sections 7 - 12

CORNER MONUMENT Set 1" pipe with 4" brass cap

DATE MONUMENT PLACED AND WITNESSED May 2, 1963

WITNESSES TO CORNER.....



CIRCLE CORNER REGISTERED

7" W. Pine S 16 W 59.5'

5" W. Pine N 49 E 45.2'

AND

DESCRIPTION IN DETAIL AS TO HOW CORNER WAS LOCATED AND IDENTIFIED OR RESTORED.

This corner was established by proportionate measurement, midpoint on line, between section corners while making a survey in this area. Unable to identify anything for U. S. B.Ts. A small squared post about 30 links NE in place but has no visible support..

SURVEYOR'S SEAL

SIGNED *Kenneth Ostling* DATE June 13, 1963
REGISTERED LAND SURVEYOR #10068