

MICHIGAN  
DEPARTMENT OF CONSERVATION  
FORESTRY DIVISION

# LAND CORNER RECORD

T. 38 N. R. 3 W.

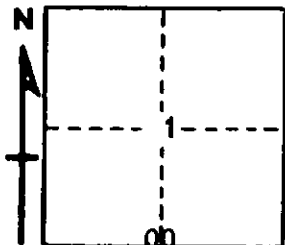
Cheboygan COUNTY

DESCRIPTION OF CORNER 1/4 corner common to Sections 1 - 12

CORNER MONUMENT Set 1" pipe with 4" brass cap

DATE MONUMENT PLACED AND WITNESSED April 18, 1963

WITNESSES TO CORNER.....



CIRCLE CORNER REGISTERED

8" Cedar S 23 W 75.2'

5" Ash N 54 W 6.2'

AND

DESCRIPTION IN DETAIL AS TO HOW CORNER WAS LOCATED AND IDENTIFIED OR RESTORED.

This corner was set by proportionate measurement, midpoint on line, between section corners while making a survey in this area. Nothing left of USBTs and can locate no previous corner.

SURVEYOR'S SEAL

SIGNED Kenneth J. Ostling DATE April 24, 1963  
REGISTERED LAND SURVEYOR #10068