

MICHIGAN
DEPARTMENT OF CONSERVATION
FORESTRY DIVISION

LAND CORNER RECORD

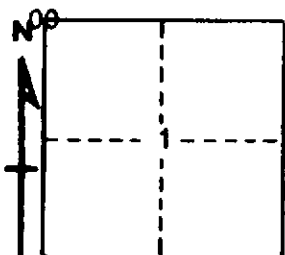
T. 38 N.R. 3 W.
T. 39 N.R. 3 W.
Cheboygan COUNTY

DESCRIPTION OF CORNER Section corner common to Sections 1 - 2 - 35 - 36

CORNER MONUMENT Left 1" pipe in place; set 1/2" bar to surface

DATE MONUMENT PLACED AND WITNESSED April 5, 1963

WITNESSES TO CORNER.....



CIRCLE CORNER REGISTERED

7" H. Maple S 55 W 36.6'
5" H. Maple S 53 E 64.5'
AND
+ on 4' Boulder N 39 W 50.2'

DESCRIPTION IN DETAIL AS TO HOW CORNER WAS LOCATED AND IDENTIFIED OR RESTORED.

This corner was located while making a survey in this area. Found 1" pipe in road, previously established by unknown surveyor, but used in surveys in Section 35.

No original evidence left. Best available evidence.

SURVEYOR'S SEAL

SIGNED Kenneth Ostling DATE April 23, 1963
REGISTERED LAND SURVEYOR #10068