

MICHIGAN  
DEPARTMENT OF CONSERVATION  
FORESTRY DIVISION

# LAND CORNER RECORD

T. 39 N.R. 3 W

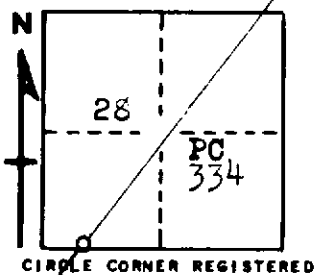
Cheboygan COUNTY

DESCRIPTION OF CORNER Closing Corner common to Sections 28-33 on west  
boundary of Private Claim #334

CORNER MONUMENT 1" pipe with 4" brass cap

DATE MONUMENT PLACED AND WITNESSED April 14, 1961

WITNESSES TO CORNER.....



14" Cedar	-	N6E	-	42.7 feet
8" W. Birch	-	N45½E	-	16.4 feet
AND 24" Cedar Stp	-	S40E	-	32.5 feet

DESCRIPTION IN DETAIL AS TO HOW CORNER WAS LOCATED AND IDENTIFIED OR RESTORED.

This corner was restored from original BTs by Forestry Division survey crew while making a survey in this area. Both large Cedars windthrown, but with excellent faces and scribe marks plain. Previously located by Doyle, but no corner set.

SURVEYOR'S SEAL

SIGNED

*Kenneth J. Oetting*  
REGISTERED LAND SURVEYOR

DATE

5/24/61