

MICHIGAN
DEPARTMENT OF CONSERVATION
FORESTRY DIVISION

LAND CORNER RECORD

T. 39 N.R. 3 W

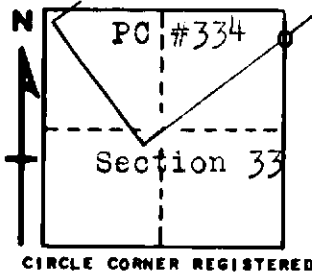
Cheboygan COUNTY

DESCRIPTION OF CORNER Closing Corner common to Sections 33-34 on SE boundary
of Private Claim #334

CORNER MONUMENT 1" pipe with 4" brass cap

DATE MONUMENT PLACED AND WITNESSED 6/30/61

WITNESSES TO CORNER.....



7" Ash - S48W - 47.2 ft

5" Cedar - S52E - 50.9 ft

AND

DESCRIPTION IN DETAIL AS TO HOW CORNER WAS LOCATED AND IDENTIFIED OR RESTORED.

This corner was restored by Forestry Division survey crew while making a survey in this area. Set corner from probable SE gov't BT stump- the only W. Pine stump in the immediate vicinity. This point checks very good for bearing and distance to section corner on south boundary of township. Too wet to discover anything by excavation. Could find no evidence of previous corner, although a 1/2" pipe set to preserve traverse information in a Doyle survey is about 73' NW. Our corner was used to control the SE boundary of private claim, and would make the claim width about 40' short of the width prescribed by the gov't description of the Private Claim.

SURVEYOR'S SEAL

SIGNED Kenneth J. Ostling DATE 7/5/61
REGISTERED LAND SURVEYOR