

SURVEY & REMONUMENTATION

JAN 31 2001

SECTION

LAND CORNER RECORDATION CERTIFICATE
Filing Requirement of Act 74, Mich. P.A. 1970

Approved By Delta County
Land Survey Remonumentation
Peer Group Under Act 345 of
P.A. Of 1990 On 12/22, 2000
Shirley Schmelzing
Acting Chairman

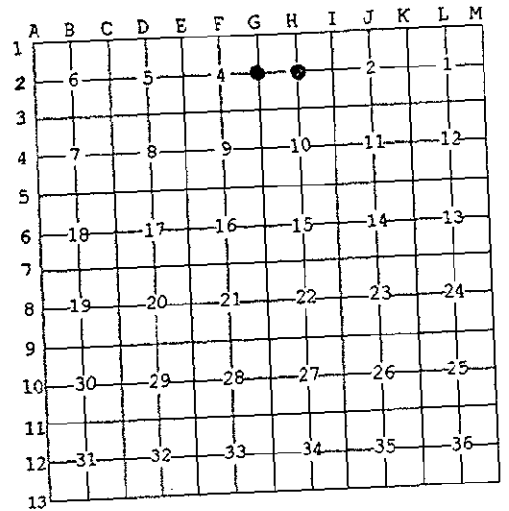
For corners in

<u>DELTA</u> (County)	Located In:	Corner Code #
1. Public Land Survey	T 37 N R 19 W T 37 N R 19 W T R T R	G-02 H-02 ✓
2. Property Controlling in Section	S T R S T R	
3. Miscellaneous Property in Sec.	S T R S T R	
4. Lot No. _____, Recorded Plat _____		
5. Private Claims _____		

RECORDED 08 January 2001
AT 9:00 O'CLOCK AM
LIBER 9 PAGE 244
Nancy J. Kolich
DELTA COUNTY MI REG. OF DEEDS
Register of Deeds Stamp & File Number

I, M.P. DAVIS, in a field survey on NOVEMBER, 2000 do hereby state that under requirements of P.A. 74, Michigan P.A. of 1970, the corner points mentioned in lines 1 and 2 above were in conformance with regulations and rules therefore as required in the current manual of survey instructions of the United States Department of the Interior, Bureau of Land Management or by a decree of a Court of Law and /or that the corner points mentioned in lines 3, 4 and 5 above were in conformance with the rules of the Michigan Board of Land Surveyors or by a Decree of a Court of Law, established, re-established, monumented, recovered, found as expressed below:

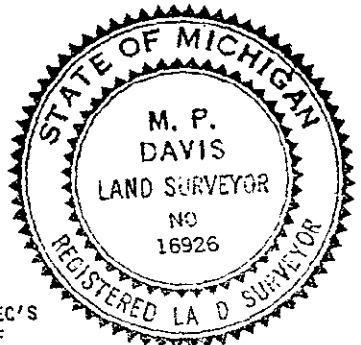
NOTE: Not more than 2 corners, all in the same town and range, may be recorded on this certificate.



A. Description of original monument and accessories and/or subsequent restoration:

G-02 [W1/4 COR SEC 3] ALGERNON MERRYWEATHER, D.S.-1848-WOOD POST-(BIRCH 16" S65°W 10 LINKS)(BALSAM 04" S40°E 26 LINKS)
C.E. BROTHERTON-1878-ORIGINALS IN PLACE-STAKE IN STONE PILE.
M.S. McNABB-1920-"IN COLLINS' CLEARING"

H-02 [C1/4 COR SEC 3] NOT SET IN ORIGINAL SURVEY
M.S. McNABB-1920-SET STAKE AT TRUE CENTER (W.BIRCH 5" N45°W 22')(W.BIRCH 6" EAST 6.7')



B. Description of corner evidence found and/or method applied in restoring or reestablishing corner:

G-02 [W1/4 COR SEC 3] NO CORNER EVIDENCE FOUND. REESTABLISHED CORNER POSITION, IN OPEN FARM FIELD, BY EXTENDING A LINE NORTH FROM THE SW COR OF SEC 3 THRU THE S1/16 COR ON THE LINE COMMON TO SEC'S 3 & 4 AND ESTABLISHING THE COR POSITION ON THIS LINE AND AT A PROPORTIONATE DISTANCE NORTH OF THE S1/16 COR. DISTANCES CHECK WELL WITH McNABB'S 1920 MEASUREMENTS. ACCEPTED AS BEING THE BEST AVAILABLE EVIDENCE AS TO THE LOCATION OF THE POSITION OF THE ORIGINAL CORNER.

H-02 [C1/4 COR SEC 3] NO EVIDENCE FOUND OF McNABB'S WOOD STAKE OR HIS BIRCH BT'S. REESTABLISHED THE CORNER AT THE INTERSECTION OF THE N-S & E-W 1/4 LINES. MEASUREMENTS BETW THE 1/4 COR'S CHECK WELL WITH THE RECORDS OF McNABB, THE DISTANCES FROM THE REESTABLISHED C1/4 TO THE CORRESPONDING 1/4 COR'S DO NOT CHECK WITH THOSE OF McNABB, BASED ON HIS MEASUREMENTS THE C1/4 SHOULD HAVE BEEN 17'± EAST & 35'± SOUTH OF THE REESTABLISHED C1/4. A SEARCH OF THIS AREA WAS MADE WITH NO OTHER EVIDENCE BEING RECOVERED.

C. Description of monument for corner and accessories established to perpetuate locating the position of the corner:

G-02 SET, 12" BELOW GRADE, A 5/8" X 18" REBAR W/A 3-1/4" ALUM CAP STAMPED TO ID THE CORNER POSITION.
U.S.D.A. STEEL WETLAND BOUNDARY POSTS NW COR SEC 3 T37N R19W S.00°57'23"W 2458.20'
N70°28'45"W. 209.20' S11°33'44"W 379.60' N.00°06'58"W. 2608.64'

NOTE: BEARINGS & DISTANCES ARE BY "GPS" MEASUREMENTS

H-02 SET A 5/8" X 18" REBAR W/A 3-1/4" ALUM CAP STAMPED TO ID THE CORNER POSITION.
SPRUCE 10" CEDAR 08" CEDAR 10" CEDAR 10" SURVEY MONUMENT SIGN POST
N02°W 6.40' S35°E 2.78' S22°W 35.72' S83°W 26.87' SOUTH 0.84' (TO FACE)

NOTE: BEARINGS TO REFERENCE OBJECTS ARE MAGNETIC-DISTANCES ARE TO A NAIL W/A DELTA COUNTY REFERENCE TAG, UNLESS OTHERWISE NOTED.

Signed by M.P. Davis
Surveyor's Michigan License No. 16926

Date 12/23/00