

STATE OF MICHIGAN  
DEPARTMENT  
OF  
NATURAL RESOURCES

LAND CORNER RECORD

Delta COUNTY

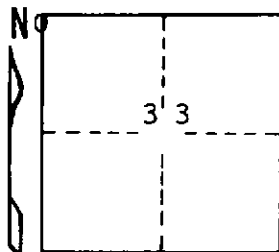
T 37 N R 24 W

DESCRIPTION OF CORNER Section corner for sections  $\frac{29}{28}$   $\frac{32}{33}$

CORNER MONUMENT 1" iron pipe with 4" aluminum cap

DATE MONUMENT PLACED AND WITNESSED 6/24/69, F. J. Bray

WITNESSES TO CORNER..... 8" Cedar (S 33) (NBT) S 80° E, 26½ links



9" Cedar (S 32 ) (NBT) S 49° W, 49½ links

AND

CIRCLE CORNER REGISTERED

DESCRIPTION IN DETAIL AS TO HOW CORNER WAS LOCATED AND IDENTIFIED OR RESTORED.

This corner was reestablished by double proportioned measurement between section corners one mile to north and west and 1/4 corners 1/2 mile to east and south. Chopped out stump faces corner as set. No original evidence found.

SURVEYOR'S SEAL

DISTRIBUTION:

SIGNED

Frank J. Bray  
REGISTERED LAND SURVEYOR

DATE 6/27/69

Frank J. Bray

County Courthouse  
Area Forester (Regions I & II)  
District or Region Surveyor  
Forestry Div., Lansing

R 4047  
Rev. 10/68