

STATE OF MICHIGAN
DEPARTMENT
OF
NATURAL RESOURCES

LAND CORNER RECORD

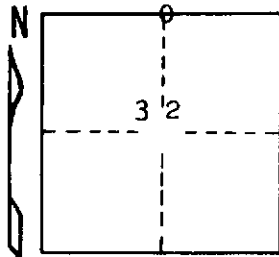
Delta COUNTY
T 37 N R 24 W

DESCRIPTION OF CORNER 1/4 corner for sections ²⁹ 32

CORNER MONUMENT 1" iron pipe with 4" aluminum cap

DATE MONUMENT PLACED AND WITNESSED 6/24/69, F. J. Bray

WITNESSES TO CORNER..... 14" W. Pine (1/4 S NBT) N 19° W, 30 links



7" Hemlock (1/4S) (NBT) S 33° E, 48 links

AND

CIRCLE CORNER REGISTERED

DESCRIPTION IN DETAIL AS TO HOW CORNER WAS LOCATED AND IDENTIFIED OR RESTORED.

This corner was placed midway and on line between section corners .
to east and to west. Hemlock with old blazes near. No original
evidence found.

SURVEYOR'S SEAL

DISTRIBUTION:

SIGNED

Frank J. Bray
REGISTERED LAND SURVEYOR

DATE

6/27/69

Frank J. Bray

County Courthouse
Area Forester (Regions I & II)
District or Region Surveyor
Forestry Div., Lansing

R 4047
Rev. 10/68