

STATE OF MICHIGAN
DEPARTMENT
OF
NATURAL RESOURCES
LAND CORNER RECORD

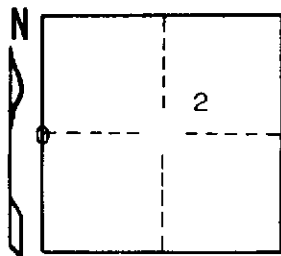
Delta COUNTY
T 37 N R 24 W

DESCRIPTION OF CORNER 1/4 corner for sections 3/2

CORNER MONUMENT 1" iron pipe with 4" aluminum cap

DATE MONUMENT PLACED AND WITNESSED 7/3/69, F. J. Bray

WITNESSES TO CORNER..... 8" Cedar (1/4S) (NBT) S 74° W, 08 1/2 links



7" Cedar (1/4S) (NBT) N 81° E, 14 links

AND

CIRCLE CORNER REGISTERED

DESCRIPTION IN DETAIL AS TO HOW CORNER WAS LOCATED AND IDENTIFIED OR RESTORED.

This corner was placed the proportioned distance between section corners and on line. Down wood post and blazes on trees near. No original evidence found.

SURVEYOR'S SEAL

DISTRIBUTION:

SIGNED

Frank J. Bray
REGISTERED LAND SURVEYOR

DATE

7/16/69

Frank J. Bray

County Courthouse
Area Forester (Regions I & II)
District or Region Surveyor
Forestry Div., Lansing

R 4047
Rev. 10/68