

MICHIGAN  
DEPARTMENT OF CONSERVATION  
FORESTRY DIVISION

# LAND CORNER RECORD

T. 37 N.R. 24W

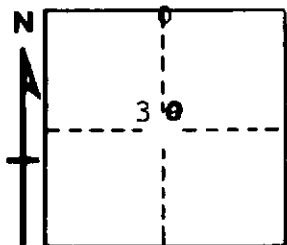
Delta COUNTY

DESCRIPTION OF CORNER 1/4 corner for sections <sup>19</sup>30

CORNER MONUMENT 1" iron pipe with 4" aluminum cap.

DATE MONUMENT PLACED AND WITNESSED 8/26/68, F. J. Bray

WITNESSES TO CORNER..... 10" Cedar (1/4 S) (NBT) N 21° E, 22 links



11" Cedar (1/4 S) (NBT) S 45° W, 25 links

AND

CIRCLE CORNER REGISTERED

### DESCRIPTION IN DETAIL AS TO HOW CORNER WAS LOCATED AND IDENTIFIED OR RESTORED.

This corner was placed the single proportioned distance and on line between section corners to east and to west. Old blazed dead aspen near. No original evidence found.

SURVEYOR'S SEAL

SIGNED Frank J. Bray DATE 12/4/68  
REGISTERED LAND SURVEYOR  
Frank J. Bray