

MICHIGAN
DEPARTMENT OF CONSERVATION
FORESTRY DIVISION

LAND CORNER RECORD

T. 37 N. R. 24W

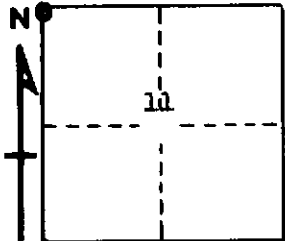
Delta COUNTY

DESCRIPTION OF CORNER Section corner for sections $\frac{3}{2}$ 10/11

CORNER MONUMENT 1" iron pipe with 4" aluminum cap

DATE MONUMENT PLACED AND WITNESSED 12/9/68, F. J. Bray

WITNESSES TO CORNER..... 7" Cedar (S.3)(NBT) N 06° W, 88 links



CIRCLE CORNER REGISTERED

9" Cedar (S.11)(NBT) S 75° E, 65½ links

1" iron pipe S 85° E, 13-1/4 links

AND
rotted 28" W.Pine stump (original B.T.) N 34° E, 31 links

DESCRIPTION IN DETAIL AS TO HOW CORNER WAS LOCATED AND IDENTIFIED OR RESTORED.

This corner was replaced from rotted W.Pine stump which had butted portion of upper face and lower blaze lying at it's base. Cruiser for Sawyer Stoll Company remembers this to be an original B.T. about 20 years ago. Depression in ground where B.T. to SW may have been. W. Pine stump to south checks for distance of line tree.

SURVEYOR'S SEAL

SIGNED Frank J. Bray DATE 3/6/69
REGISTERED LAND SURVEYOR
Frank J. Bray