

MICHIGAN  
DEPARTMENT OF CONSERVATION  
FORESTRY DIVISION

LAND CORNER RECORD

T. 37 N.R. 24 W

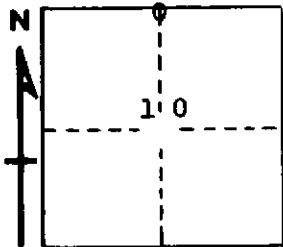
Delta COUNTY

DESCRIPTION OF CORNER 1/4 corner for sections  $\frac{3}{10}$

CORNER MONUMENT 1" iron pipe with 4" aluminum cap

DATE MONUMENT PLACED AND WITNESSED 12/10/68, F. J. Bray

WITNESSES TO CORNER..... 9" W. Pine (1/4 S) (NBT) S 73° W, 35½ links



10" R. Pine (1/4 S) (NBT) N 05° E, 44 links

AND

CIRCLE CORNER REGISTERED

DESCRIPTION IN DETAIL AS TO HOW CORNER WAS LOCATED AND IDENTIFIED OR RESTORED.

This corner was replaced from burnt R. Pine stump to NW and rotted stump bottom to SE. Both check well for bearings and distance in the original field notes. Slight discoloration where post may have been. Small wood post to the N 17° E, 31 links. Corner checks well with section corners to east and west.

SURVEYOR'S SEAL

SIGNED Frank J. Bray DATE 3/6/69  
REGISTERED LAND SURVEYOR  
Frank J. Bray