

MICHIGAN  
DEPARTMENT OF CONSERVATION  
FORESTRY DIVISION

LAND CORNER RECORD

T. 37 N.R. 24 W

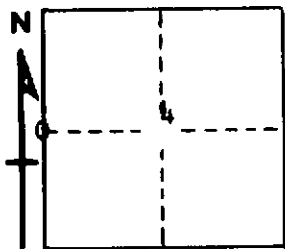
Delta COUNTY

DESCRIPTION OF CORNER 1/4 corner for sections 5/4

CORNER MONUMENT 1" iron pipe with 4" aluminum cap

DATE MONUMENT PLACED AND WITNESSED 11/13/68, F. J. Bray

WITNESSES TO CORNER..... 7" Aspen (1/4 S)(NBT) N 73° W, 43½ links



6" Aspen (1/4 S)(NBT) S 21° W, 53½ links

AND

CIRCLE CORNER REGISTERED

DESCRIPTION IN DETAIL AS TO HOW CORNER WAS LOCATED AND IDENTIFIED OR RESTORED.

This corner was replaced from 1/2" iron pipe and wood post. Earth bulldozed in area. Hemlock stump bottom to NW checks fairly well for bearing and distance with original notes.

SURVEYOR'S SEAL

SIGNED Frank J. Bray DATE 3/6/69  
REGISTERED LAND SURVEYOR  
Frank J. Bray