

MICHIGAN
DEPARTMENT OF CONSERVATION
FORESTRY DIVISION

LAND CORNER RECORD

T. 37 N.R. 24 W

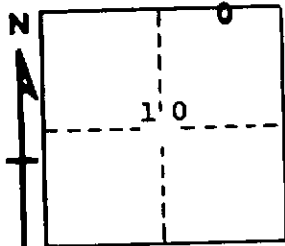
Delta COUNTY

DESCRIPTION OF CORNER E 1/16 corner for sections $\frac{3}{10}$

CORNER MONUMENT 1" iron pipe with 4" aluminum cap

DATE MONUMENT PLACED AND WITNESSED 12/10/68, F. J. Bray

WITNESSES TO CORNER..... 9" cedar (E 1/16) (BT) N 77° W, 19 links



8" cedar (E 1/16) (BT) N 38° E, 05 links

AND

CIRCLE CORNER REGISTERED

DESCRIPTION IN DETAIL AS TO HOW CORNER WAS LOCATED AND IDENTIFIED OR RESTORED.

This corner was placed midway and on line between section corner to the East and 1/4 corner to the West. 1/2" pipe with elbow N 49° E, 21 links.

SURVEYOR'S SEAL

SIGNED Frank J. Bray DATE 3/6/69
REGISTERED LAND SURVEYOR
Frank J. Bray