

MICHIGAN
DEPARTMENT OF CONSERVATION
FORESTRY DIVISION

LAND CORNER RECORD

T. 37 N.R. 24 W

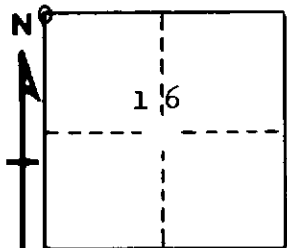
Delta COUNTY

DESCRIPTION OF CORNER Section corner for sections $\frac{8}{9}$ 17/16

CORNER MONUMENT 1" iron pipe with 4" aluminum cap

DATE MONUMENT PLACED AND WITNESSED 6/17/69, F. J. Bray

WITNESSES TO CORNER..... 6" cedar (S 8) (NBT) N 53° W, 08½ links



8" cedar (S 17) (NBT) S 05° W, 50 links

AND

CIRCLE CORNER REGISTERED

DESCRIPTION IN DETAIL AS TO HOW CORNER WAS LOCATED AND IDENTIFIED OR RESTORED.

This corner was reestablished by double proportioned measurement between section corners one mile to N, S and west and 1/4 corner 1/2 mile east. Old blazes in vicinity. No original evidence found.

SURVEYOR'S SEAL

SIGNED Frank J. Bray DATE 6/19/69
REGISTERED LAND SURVEYOR
Frank J. Bray