

MICHIGAN  
DEPARTMENT OF CONSERVATION  
FORESTRY DIVISION

# LAND CORNER RECORD

T. 37 N.R. 24W

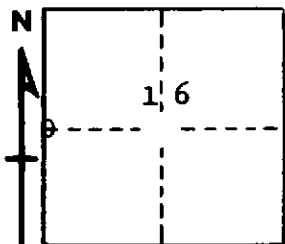
Delta COUNTY

DESCRIPTION OF CORNER 1/4 corner for sections 17/16

CORNER MONUMENT 1" iron pipe with 4" aluminum cap

DATE MONUMENT PLACED AND WITNESSED 6/17/69, F. J. Bray

WITNESSES TO CORNER..... 12" W. Pine (1/4S NBT) West, 40 links



8" Cedar (1/4S) (NBT) N 56° E, 35½ links

AND

CIRCLE CORNER REGISTERED

DESCRIPTION IN DETAIL AS TO HOW CORNER WAS LOCATED AND IDENTIFIED OR RESTORED.

This corner was placed midway and on line between section corners to north and south. No original evidence found.

SURVEYOR'S SEAL

SIGNED Frank J. Bray DATE 6/19/69  
REGISTERED LAND SURVEYOR

Frank J. Bray