

MICHIGAN
DEPARTMENT OF CONSERVATION
FORESTRY DIVISION

LAND CORNER RECORD

T. 37 N.R. 24 W

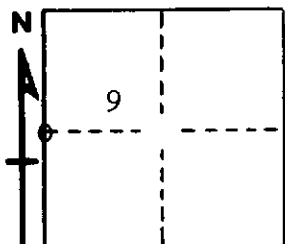
Delta COUNTY

DESCRIPTION OF CORNER 1/4 corner for sections 8/9

CORNER MONUMENT 1" iron pipe with 4" aluminum cap

DATE MONUMENT PLACED AND WITNESSED 6/17/69, F. J. Bray

WITNESSES TO CORNER..... 5" cedar (1/4 S) (NBT) S 82° E, 19 links



5" cedar (1/4 S) (NBT) N 39° W, 15 links

AND

CIRCLE CORNER REGISTERED

DESCRIPTION IN DETAIL AS TO HOW CORNER WAS LOCATED AND IDENTIFIED OR RESTORED.

This corner was placed midway and on line between section corners to north and to south. No original evidence found. Slab of rotted stump scribed 1/4 S NBT faces corner as set.

SURVEYOR'S SEAL

SIGNED Frank J. Bray DATE 6/19/69
REGISTERED LAND SURVEYOR
Frank J. Bray