

MICHIGAN
DEPARTMENT OF CONSERVATION
FORESTRY DIVISION

LAND CORNER RECORD

T. 37 N.R. 24 W

Delta COUNTY

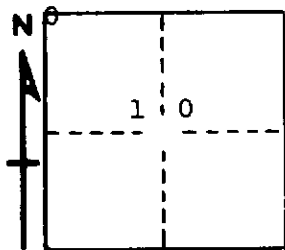
4/3

DESCRIPTION OF CORNER Section corner for sections 9/10

CORNER MONUMENT 1" iron pipe with 4" aluminum cap

DATE MONUMENT PLACED AND WITNESSED 9/6/68, F. J. Bray

WITNESSES TO CORNER..... 8" cedar (S.4) (NBT) N 50° W, 05 links



12" cedar (S.10) (NBT) S 25° E, 31 links

AND

CIRCLE CORNER REGISTERED

DESCRIPTION IN DETAIL AS TO HOW CORNER WAS LOCATED AND IDENTIFIED OR RESTORED.

This corner was set at scribed wood post set by Marcus McNabb in 1931 from original B.T.'s. Rotted stumps in approximate distances and bearings but no visible marks found at the present time. Squared cedar and fence corner near.

SURVEYOR'S SEAL

SIGNED Frank J. Bray DATE 12/11/68
REGISTERED LAND SURVEYOR
Frank J. Bray