

MICHIGAN  
DEPARTMENT OF CONSERVATION  
FORESTRY DIVISION

# LAND CORNER RECORD

T. 37 N.R. 24 W

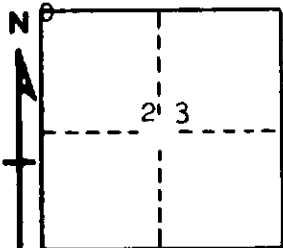
Delta COUNTY

DESCRIPTION OF CORNER Section corner for sections  $\frac{15}{14}$   $\frac{22}{23}$

CORNER MONUMENT 1 $\frac{1}{4}$ " iron pipe set 4 links north of approximate  $\mathcal{C}$  of dirt road.

DATE MONUMENT PLACED AND WITNESSED 10/7/68, F. J. Bray

WITNESSES TO CORNER..... Power pole N 65 $^{\circ}$  W, 97 links



12" B. Ash (S. 23) (NBT) S 03 $^{\circ}$  E, 100 links

E & W fence, north, 12 links

AND

CIRCLE CORNER REGISTERED

## DESCRIPTION IN DETAIL AS TO HOW CORNER WAS LOCATED AND IDENTIFIED OR RESTORED.

This corner was set by unknown party. Corner checks fairly well with stream crossing to east and for distance to corner to west. Corner lies in north margin of abandoned E and W dirt road.

SURVEYOR'S SEAL

SIGNED Frank J. Bray DATE 12/11/68  
REGISTERED LAND SURVEYOR  
Frank J. Bray