

MICHIGAN
DEPARTMENT OF CONSERVATION
FORESTRY DIVISION

LAND CORNER RECORD

T. 37 N.R. 24 W

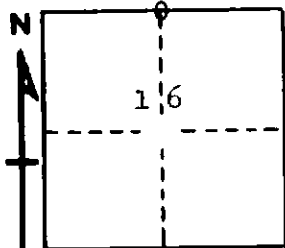
Delta COUNTY

DESCRIPTION OF CORNER 1/4 corner for sections $\frac{9}{16}$

CORNER MONUMENT 1" iron pipe with 4" aluminum cap.

DATE MONUMENT PLACED AND WITNESSED 10/9/68, F. J. Bray

WITNESSES TO CORNER..... 8" Hemlock (1/4 S.) (NBT) N 51° E, 31½ links



8" Hemlock (1/4 S) (NBT) S 12° W, 50½ links

AND

CIRCLE CORNER REGISTERED

DESCRIPTION IN DETAIL AS TO HOW CORNER WAS LOCATED AND IDENTIFIED OR RESTORED.

This corner was replaced from two white pine stumps which have overgrowth of blazes and notches. Stumps in poor condition. Stump to NW has B.T. on it which was cut in with a knife. Corner found by survey crew while doing retracement survey.

SURVEYOR'S SEAL

SIGNED Frank J. Bray DATE 12/11/68
REGISTERED LAND SURVEYOR
Frank J. Bray