

MICHIGAN
DEPARTMENT OF CONSERVATION
FORESTRY DIVISION

LAND CORNER RECORD

T. 37 N.R. 24 W

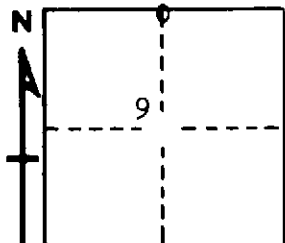
Delta COUNTY

DESCRIPTION OF CORNER 1/4 corner for sections $\frac{4}{9}$

CORNER MONUMENT 1" iron pipe with 4" aluminum cap

DATE MONUMENT PLACED AND WITNESSED 11/7/68, F. J. Bray

WITNESSES TO CORNER..... 15" W. Pine (NBT) N 74° E, 34 links



10" Cedar (1/4 S) (NBT) S 45° W, 12½ links

AND

CIRCLE CORNER REGISTERED

DESCRIPTION IN DETAIL AS TO HOW CORNER WAS LOCATED AND IDENTIFIED OR RESTORED.

This corner was placed 5 links east of stream. Cedar stump with upper and lower faces bears S 85° E, 18 links. This may have been a more recent witness as it is not noted in notes. Blazes on other cedars approximately 40 years old.

SURVEYOR'S SEAL

SIGNED Frank J. Bray DATE 12/11/68
REGISTERED LAND SURVEYOR
Frank J. Bray