

MICHIGAN
DEPARTMENT OF CONSERVATION
FORESTRY DIVISION

LAND CORNER RECORD

T. 37 N.R. 24 W

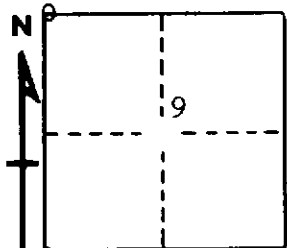
Delta COUNTY

DESCRIPTION OF CORNER Section corner for sections $\frac{5}{4}$
 $\frac{8}{9}$

CORNER MONUMENT 1" iron pipe with 4" aluminum cap.

DATE MONUMENT PLACED AND WITNESSED 11/-/68, F. J. Bray

WITNESSES TO CORNER..... 6" Cedar (S.8) (NBT) S 74° W, 86 links



5" Tamarack (S.5) (NBT) N 69° W, 60½ links

AND

CIRCLE CORNER REGISTERED

DESCRIPTION IN DETAIL AS TO HOW CORNER WAS LOCATED AND IDENTIFIED OR RESTORED.

This corner was replaced from old wood post and point of older post.
Tamarack stump bottoms check well for bearings and distances with original
notes. Both stumps badly rotted. No marks visible.

SURVEYOR'S SEAL

SIGNED Frank J. Bray DATE 12/11/68
REGISTERED LAND SURVEYOR

Frank J. Bray