

SURVEY & REMONUMENTATION

OCT 03 2000

SECTION

Approved By Delta County
Land Survey Remonumentation
Peer Group Under Act 345 of
P.A. Of 1990 On July 12, 2000
Robert Schmelzig
acting Chairman

LAND CORNER RECORDATION CERTIFICATE
Filing Requirement of Act 74, Mich. P.A. 1970

For corners in

DELTA (County)	Located In:	Corner Code #
1. Public Land Survey	T 38 NR 19 W	F-05 ✓
	T 38 NR 19 W	F-07
	T R	
	T R	
	T R	
2. Property Controlling in Section	S T R	
	S T R	
	S T R	
3. Miscellaneous Property in Sec.	S T R	
	S T R	

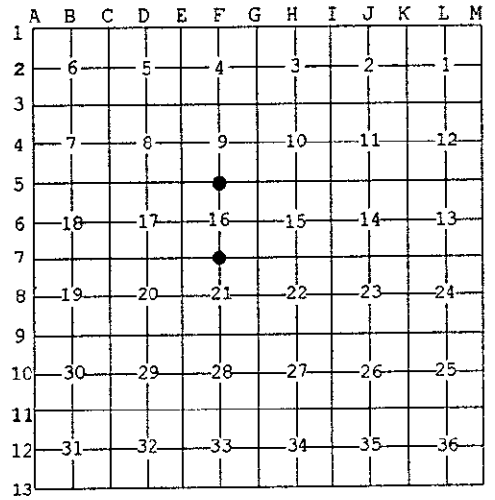
RECORDED 28 July 2000
AT 9:00 O'CLOCK a.m.
LIBER 9 PAGE 226
William C. [Signature]
DELTA COUNTY MI REG. OF DEEDS
Register of Deeds Stamp & File Number

F-05 [N1/4 COR SEC 16] F-07 [N1/4 COR SEC 21]

4. Lot No. _____, Recorded Plat _____
5. Private Claims _____

I, M.P. DAVIS, in a field survey on JUNE, 2000 do hereby state that under requirements of P.A. 74, Michigan P.A. of 1970, the corner points mentioned in lines 1 and 2 above were in conformance with regulations and rules therefore as required in the current manual of survey instructions of the United States Department of the Interior, Bureau of Land Management or by a decree of a Court of Law and /or that the corner points mentioned in lines 3, 4 and 5 above were in conformance with the rules of the Michigan Board of Land Surveyors or by a Decree of a Court of Law; established, re-established, monumented, recovered, found as expressed below:

NOTE: Not more than 2 corners, all in the same town and range, may be recorded on this certificate.

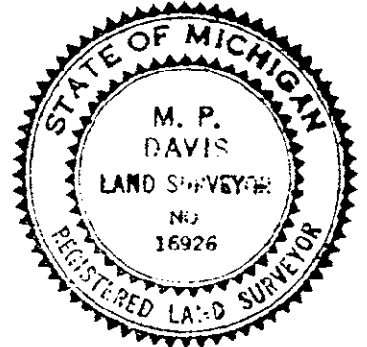


A. Description of original monument and accessories and/or subsequent restoration:

- F-05 [N1/4 COR SEC 16] ALGERNON MERRYWEATHER, D.S.-1848-CEDAR 12" CORNER TREE M.S. McNABB-1920-ORIGINALS GONE-ESTABLISHED 1/2 DISTANCE BETWEEN CORNERS (POPLAR 16" NORTH 54')(BIRCH 08" S50°E 30.0')
- F-07 [N1/4 COR SEC 21] ALGERNON MERRYWEATHER, D.S.-1848-WOOD POST-(BALSAM 07" S40°E 13 LINKS)(CEDAR 06" N60°E 11 LINKS) NO RECORD EVIDENCE OF CORNER RECOVERY AND/OR SUBSEQUENT MONUMENTATION

B. Description of corner evidence found and/or method applied in restoring or reestablishing corner:

- F-05 [N1/4 COR SEC 16] NO CORNER EVIDENCE FOUND. REESTABLISHED CORNER POSITION ON LINE WITH AND AT MIDPOINT BETWEEN SECTION CORNERS 1/2 MILE EAST & WEST.
- F-07 [N1/4 COR SEC 21] NO CORNER EVIDENCE FOUND. REESTABLISHED CORNER POSITION ON LINE WITH AND AT MIDPOINT BETWEEN SECTION CORNERS 1/2 MILE EAST & WEST. CHECK FARM FENCES AT THE EAST & WEST 1/16 COR POSITIONS BUT UNABLE TO RECTIFY THE 1/4 COR POSITION AT ANY OTHER LOCATION AS THE MEASUREMENTS TO THE FARM FENCES MADE LITTLE OR NO SENSE.



C. Description of monument for corner and accessories established to perpetuate locating the position of the corner:

- F-05 SET, A BERNISEN A1NB30 ALUM MONUMENT WITH THE CAP STAMPED TO ID THE CORNER POSITION.

CEDAR 09"	CEDAR 09"	CEDAR 14"	CEDAR 12"	SURVEY MONUMENT SIGN POST	C/L EAST-WEST COUNTY ROAD
N38°W	N32°E	S38°E	S41°W	SOUTH	NORTH
51.12'	58.00'	41.80'	37.39'	1.67' (TO FACE)	15'±
- F-07 SET, 6" BELOW GRADE, A 5/8" X 18" REBAR W/A 3-1/4" ALUM CAP STAMPED TO ID THE CORNER POSITION.

ASH 08"	ASH 07"	ASH 07"	ASH 08"	SURVEY MONUMENT SIGN POST
N22°W	N26°E	S44°E	S45°W	NORTH
31.15'	35.72'	36.18'	36.38'	23.50' (TO FACE)

NOTE: BEARINGS TO REFERENCE OBJECTS ARE MAGNETIC-DISTANCES ARE TO A NAIL W/A DELTA COUNTY REFERENCE TAG, UNLESS OTHERWISE NOTED.

Signed by M.P. Davis Date 7/13/00
Surveyor's Michigan License No. 16926