

**SURVEY & REMONUMENTATION**

**OCT 08 2000**

**SECTION**

**LAND CORNER RECORDATION CERTIFICATE**  
 Filing Requirement of Act 74, Mich. P.A. 1970

Approved By Delta County  
 Land Survey Remonumentation  
 Peer Group Under Act 345 of  
 P.A. Of 1990 On July 12, 2000  
Richard B. Threlking  
 Acting Chairman

For corners in

DELTA (County)	Located In:	Corner Code #
1. Public Land Survey	T 38 NR 19 W	G-05
	T 38 NR 19 W	G-06
	T R	
	T R	
2. Property Controlling in Section	S T R	
	S T R	
3. Miscellaneous Property in Sec.	S T R	
	S T R	

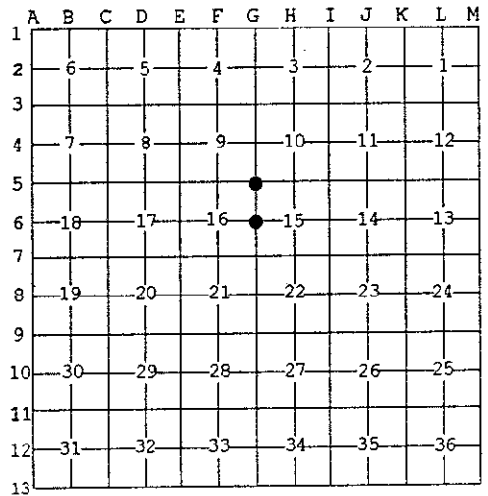
RECORDED 28 July 2000  
 AT 9:00 O'CLOCK a.m.  
 LIBER 9 PAGE 227  
Walter C. Thomas  
 DELTA COUNTY MI REG. OF DEEDS

Register of Deeds Stamp & File Number

4. Lot No. \_\_\_\_\_, Recorded Plat \_\_\_\_\_  
 5. Private Claims \_\_\_\_\_

I, M.P. DAVIS, in a field survey on JUNE, 2000 do hereby state that under requirements of P.A. 74, Michigan P.A. of 1970, the corner points mentioned in lines 1 and 2 above were in conformance with regulations and rules therefore as required in the current manual of survey instructions of the United States Department of the Interior, Bureau of Land Management or by a decree of a Court of Law and/or that the corner points mentioned in lines 3, 4 and 5 above were in conformance with the rules of the Michigan Board of Land Surveyors or by a Decree of a Court of Law; established, re-established, monumented, recovered, found as expressed below:

NOTE: Not more than 2 corners, all in the same town and range, may be recorded on this certificate.



A. Description of original monument and accessories and/or subsequent restoration:

- G-05 [NW COR SEC 15] ALGERNON MERRYWEATHER, D.S.-1848-WOOD POST-(BEECH 08" N74°E 10 LINKS)(BEECH 07" S50°W 11 LINKS) M.S.McNABB-1920-IORN BOLT IN PLACE- COR FENCE POSTS S40°W 46.0' & S50°E 49.5'
- G-06 [W1/4 COR SEC 15] ALGERNON MERRYWEATHER, D.S.-1848-WOOD POST-(BALSAM 10" N44°E 29 LINKS)(BEECH 10" S77°W 27 LINKS) NO RECORD EVIDENCE OF CORNER RECOVERY AND/OR SUBSEQUENT MONUMENTATION

B. Description of corner evidence found and/or method applied in restoring or reestablishing corner:

- G-05 [NW COR SEC 15] FOUND IN PLACE AND 34"± BELOW THE COUNTY ROAD SURFACE AN IRON BOLT. ID COR MONUMENT AS BEING THE SAME RECOVERED IN 1920 BY McHABB FROM HIS FENCE POST BT TO THE SE, NOW INCLINED HEAVILY TO THE SE. ACCEPTED EXISTING MONUMENT AS BEING THE BEST AVAILABLE EVIDENCE AS TO THE LOCATION OF THE POSITION OF THE ORIGINAL CORNER.
- G-06 [W1/4 COR SEC 15] NO CORNER EVIDENCE FOUND. REESTABLISHED CORNER POSITION ON LINE WITH ANCIENT FARM FENCES EAST & WEST AND ON APPROXIMATE C/L OF N-S GRAVEL COUNTY ROAD. ACCEPTED THIS POSITION AS BEING THE BEST AVAILABLE EVIDENCE AS TO THE LOCATION OF THE POSITION OF THE ORIGINAL CORNER.



C. Description of monument for corner and accessories established to perpetuate locating the position of the corner:

- G-05 SET, OVER EXISTING MON & 6"± BELOW GRADE A 5/8" X 18" REBAR W/A 3-1/4" ALUM CAP STAMPED TO ID THE CORNER POSITION.  
 ANCHOR POLE      POWER POLE      5/8" X 18" REBARS W/A 2" ALUM DELTA COUNTY WIT CAP      SURVEY MONUMENT SIGN POST  
 N52°W      S46°W      N45°E      S45°E      NORTH  
 37.45'      44.90'      39.98'      49.93'      26.92' (TO FACE)
- G-06 SET, 6" BELOW GRADE, A 5/8" X 18" REBAR W/A 3-1/4" ALUM CAP STAMPED TO ID THE CORNER POSITION.  
 CORNER FENCE POST      DRILL HOLES IN FIELD STONES  
 WEST      N33°W      N45°E      S20°E  
 35.70'      63.77'      64.30'      63.16'

NOTE: BEARINGS TO REFERENCE OBJECTS ARE MAGNETIC-DISTANCES ARE TO A NAIL W/A DELTA COUNTY REFERECNE TAG, UNLESS OTHERWISE NOTED.

Signed by M.P. Davis Date 7/13/00  
 Surveyor's Michigan License No. 16926