

SURVEY & REMONUMENTATION

OCT 08 2000

SECTION

LAND CORNER RECORDATION CERTIFICATE
Filing Requirement of Act 74, Mich. P.A. 1970

Approved By Delta County
Land Survey Remonumentation
Peer Group Under Act 345 of
P.A. Of 1990 On July 12, 2000
Robert Schmalz
Acting Chairman

For corners in

DELTA (County)	Located In:	Corner Code #
1. Public Land Survey	T 38 NR 19 W	H-05 ✓
	T 38 NR 19 W	H-07
	T R	
	T R	
2. Property Controlling in Section	S T R	
	S T R	
3. Miscellaneous Property in Sec.	S T R	
	S T R	

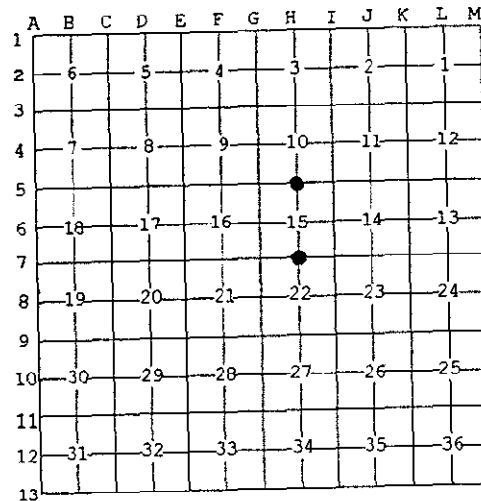
RECORDED 28 July 2000
AT 9:00 O'CLOCK a.m.
LIBER 9 PAGE 228
William C. Thomas
DELTA COUNTY MI REG. OF DEEDS

Register of Deeds Stamp & File Number

4. Lot No. _____, Recorded Plat _____
5. Private Claims _____

I, M.P. DAVIS, in a field survey on JUNE, 2000 do hereby state that under requirements of P.A. 74, Michigan P.A. of 1970, the corner points mentioned in lines 1 and 2 above were in conformance with regulations and rules therefore as required in the current manual of survey instructions of the United States Department of the Interior, Bureau of Land Management or by a decree of a Court of Law and /or that the corner points mentioned in lines 3, 4 and 5 above were in conformance with the rules of the Michigan Board of Land Surveyors or by a Decree of a Court of Law; established, re-established, monumented, recovered, found as expressed below:

NOTE: Not more than 2 corners, all in the same town and range, may be recorded on this certificate.



A. Description of original monument and accessories and/or subsequent restoration:

- H-05 [N1/4 COR SEC 15] ALGERNON MERRYWEATHER, D.S.-1848-WOOD POST-(BALSAM 04" N40°E 24 LINKS)(SUGAR 14" S45°W 29 LINKS) M.S.McNABB-1933-ORIGINALS GONE-SET IRON FROM IMPROVEMENTS (BALSAM 12" S33°E 43.5')(CEDAR 14" N35°E 68.60')
- H-07 [N1/4 COR SEC 22] ALGERNON MERRYWEATHER, D.S.-1848-WOOD POST-(HEMLOCK 12" S61°W 20 LINKS)(BIRCH 14" N43°E 05 LINKS) NO RECORD EVIDENCE OF CORNER RECOVERY AND/OR SUBSEQUENT MONUMENTATION

B. Description of corner evidence found and/or method applied in restoring or reestablishing corner:

- H-05 [N1/4 COR SEC 15] NO CORNER EVIDENCE FOUND. REESTABLISHED THE CORNER POSITION FROM McNABB'S 1933 BY USING HIS DISTANCES EAST FROM THE NW COR OF SEC 15 AND HIS DISTANCE EAST FROM THE FARM FENCE AT THE WEST "1/8" LINE AND FROM HIS CEDAR BT TO THE NE. ACCEPTED THIS LOCATION AS BEING THE BEST AVAILABLE EVIDENCE AS TO THE LOCATION OF THE POSITION OF THE ORIGINAL CORNER.
- H-07 [N1/4 COR SEC 22] NO CORNER EVIDENCE TO BE FOUND. REESTABLISHED CORNER POSITION FROM IMPROVEMENTS. C/L OF E-W COUNTY ROAD AND ANCIENT FARM FENCES NORTH & SOUTH. ACCEPTED THIS LOCATION AS BEING THE BEST AVAILABLE EVIDENCE AS TO THE LOCATION OF THE POSITION OF THE ORIGINAL CORNER.



C. Description of monument for corner and accessories established to perpetuate locating the position of the corner:

- H-05 SET, 6"± BELOW GRADE A 5/8" X 18" REBAR W/A 3-1/4" ALUM CAP STAMPED TO ID THE CORNER POSITION.
CEDAR 08" SPRUCE 13" SPRUCE 08" CEDAR 07"
N40°W N53°E S25°E S33°W
42.24' 54.15' 73.10' 62.40'
- H-07 SET, 6"± BELOW GRADE, A 5/8" X 18" REBAR W/A 3-1/4" ALUM CAP STAMPED TO ID THE CORNER POSITION. SURVEY MONUMENT SIGN POST
POWER POLE STUB 5/8" X 18" REBARS W/A 2" ALUM DELTA COUNTY WIT CAP S05°W
N05°E N45°E S45°E
29.66' 20.38' 20.51' 25.53' (TO FACE)

NOTE: BEARINGS TO REFERENCE OBJECTS ARE MAGNETIC-DISTANCES ARE TO A NAIL W/A DELTA COUNTY REFERENCE TAG, UNLESS OTHERWISE NOTED.

Signed by M.P. Davis
Surveyor's Michigan License No. 16926

Date 7/13/00