

JAN 25 2000

SECTION

LAND CORNER RECORDATION CERTIFICATE
Filing Requirement of Act 74, Mich. P.A. 1970

Approved by Delta County
Land Survey Remonumentation
Peer Group Under Act 345 Of
P.A. Of 1990 On Dec 28, 1999

R. Schmalzing
Chairman

For corners in

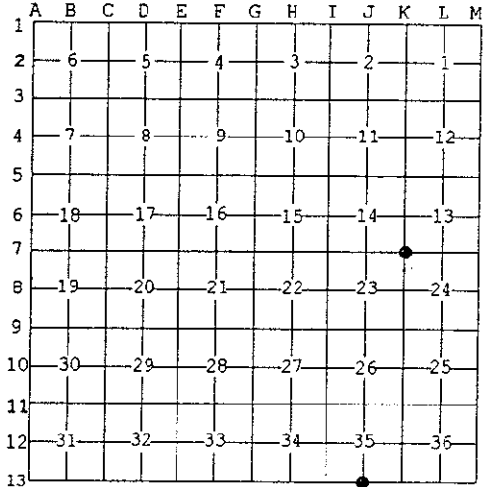
DELTA (County)	Located In:	Corner Code #
1. Public Land Survey	T 39 N R 19 W	J-13 SAME
	T 38 N R 19 W	J-01 CORNER ✓
	T 39 N R 19 W	K-07
2. Property Controlling in Section	S ___ T ___ R ___	_____
	S ___ T ___ R ___	_____
	S ___ T ___ R ___	_____
3. Miscellaneous Property in Sec.	S ___ T ___ R ___	_____
	S ___ T ___ R ___	_____
	S ___ T ___ R ___	_____

REC'D 01-04-00
 2:00 O'CLOCK PM
 LIBER 9 PAGE 183
Walter C. Thom
 REGISTER OF DEEDS

Register of Deeds Stamp & File Number

J-13 [S1/4 COR SEC 35] K-07 [NW COR SEC 24]
 4. Lot No. _____, Recorded Plat _____
 5. Private Claims _____

I, M.P. DAVIS, in a field survey on NOVEMBER, 19 99 do hereby state that under requirements of P.A. 74, Michigan P.A. of 1970, the corner points mentioned in lines 1 and 2 above were in conformance with regulations and rules therefore as required in the current manual of survey instructions of the United States Department of the Interior, Bureau of Land Management or by a decree of a Court of Law and /or that the corner points mentioned in lines 3, 4 and 5 above were in conformance with the rules of the Michigan Board of Land Surveyors or by a Decree of a Court of Law; established, re-established, monumented, recovered, found as expressed below:



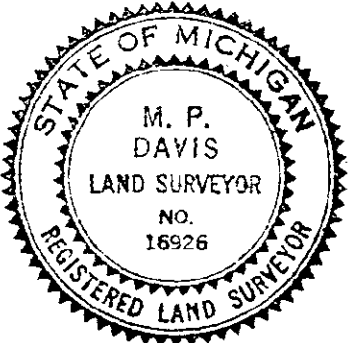
NOTE: Not more than 2 corners, all in the same town and range, may be recorded on this certificate.

A. Description of original monument and accessories and/or subsequent restoration:

- J-13 [S1/4 COR SEC 35] JOHN BURT, D.S.-1845-WOOD POST (BEECH 09" N03°E 20 LINKS)(BEECH 09" N71°W 42 LINKS) NO RECORD EVIDENCE OF CORNER RECOVERY AND/OR SUBSEQUENT MONUMENTATION
- K-07 [NW COR SEC 24] A.MERRYWEATHER, D.S.-1848-WOOD POST (HEMLOCK 10" S56°E 10 LINKS)(SUGAR 12" N73°W 32 LINKS) M.S.McNABB-1912-FOUND IRON BOLT SET BY JOHN CRAIG COUNTY SURVEYOR-GATE POST NE DIRECTION 33.5' CORNER FENCE NE DIRECTION 38.2' T.O'BRIEN-1980-L.2 OF LCR'S PG. 407-FOUND 1/2" IRON PIPE AT INTERSECTION OF ROADS E-W & S (PP S61°W 40.4')(FENCE POST N44°E 45.57')
- G.KOEPKE, M.D.O.T.-1987-L.5 OF LCR'S PG. 308-FOUND 1/2" I.P., ID CORNER MONUMENT FROM BT'S L.2 PG 407 NOTED NEW BT'S (FENCE POST N45°E 45.73')(PP S65°W 40.37')(CHINESE ELM 6" N25°W 52.00')(FENCE POST S40°W 43.28')
- NEIL HILL, M.D.O.T.-1989-L.6 OF LCR'S PG.159-REPLACED, INSIDE A MONUMENT BOX, THE EXISTING MONUMENT W/A 1/2" REBAR AND SURVEY CAP. SAME WITNESSES AS SHOWN AT L.5 PG. 308.

B. Description of corner evidence found and/or method applied in restoring or reestablishing corner:

- J-13 [S1/4 COR SEC 35] NO CORNER EVIDENCE FOUND. REESTABLISHED CORNER POSITION FROM ANCIENT OCCUPATION LINES(FARM FENCES N & S) AND COUNTY ROAD IMPROVEMENTS (1/2 DISTANCE BETWEEN N & S R/W FENCES). ACCEPTED AS BEING THE BEST AVAILABLE EVIDENCE AS TO THE LOCATION OF THE POSITION OF THE ORIGINAL CORNER.
- K-07 [NW COR SEC 24] FOUND IN PLACE AND SET INSIDE A MONUMENT BOX A 1/2" REBAR WITH RLS CAP. ID CORNER MONUMENT FROM BT'S RECORDED AT L.6 OF LCR'S PG.159. ACCEPTED EXISTING MONUMENT AS BEING THE BEST AVAILABLE EVIDENCE AS TO THE LOCATION OF THE POSITION OF THE ORIGINAL CORNER.



C. Description of monument for corner and accessories established to perpetuate locating the position of the corner:

- J-13 SET A 5/8" REBAR W/A 3-1/4" ALUM CAP STAMPED TO ID THE CORNER POSITION.
 CEDAR 05" CEDAR 06" POWER POLE NOTE: FARM FIELDS IN ALL 4 QUADRANTS
 N08°W S72°W S28°E
 32.07' 59.68' 48.80' 46.24'
- K-07 REPLACED EXISTING RLS CAP W/A 3-1/4" ALUM CAP STAMPED TO ID THE CORNER POSITION.
 CHINESE ELM 08" DRILL HOLE IN LARGE FIELD STONES SURVEY MONUMENT SIGN POS
 N20°W S49°W S30°E N51°E
 51.90' 33.52' 88.40' 27.06'

NOTE: BEARINGS TO REFERENCE OBJECTS ARE MAGNETIC-DISTANCES ARE TO A NAIL W/A DELTA COUNTY REFERECNE TAG, UNLESS OTHERWISE NOTED.

Signed by M.P. Davis Date 12/28/99
 Surveyor's Michigan License No. 16926