

JAN 25 2000

SECTION

LAND CORNER RECORDATION CERTIFICATE
Filing Requirement of Act 74, Mich. P.A. 1970

Approved By Delta County
Land Survey Remonumentation
Peer Group Under Act 345 Of
P.A. Of 1990 On Dec 28, 1999
Chairman

For corners in

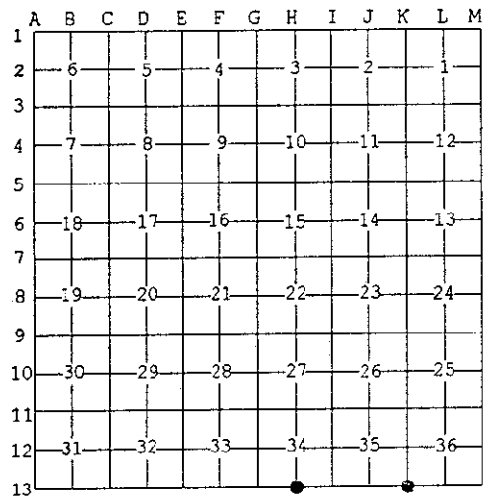
Table with columns: DELTA (County), Located In:, Corner Code #. Rows include Public Land Survey, Property Controlling in Section, and Miscellaneous Property in Sec.

Register of Deeds Stamp & File Number. Includes handwritten date 01-04-00, time 2:00, page 9, and name Walter C. Thum.

4. Lot No. , Recorded Plat
5. Private Claims

I, M.P. DAVIS, in a field survey on NOVEMBER 19 99 do hereby state that under requirements of P.A. 74, Michigan P.A. of 1970, the corner points mentioned in lines 1 and 2 above were in conformance with regulations and rules...

NOTE: Not more than 2 corners, all in the same town and range, may be recorded on this certificate.

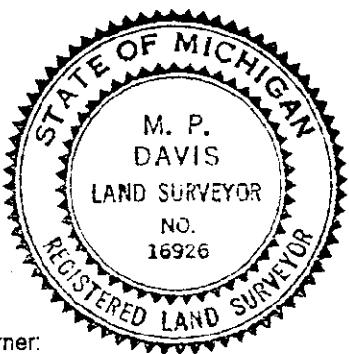


A. Description of original monument and accessories and/or subsequent restoration:

- H-13 [S1/4 COR SEC 34] JOHN BURT, D.S.-1845-WOOD POST (SUGAR 12" N51°E 11 LINKS)(BIRCH 04" N74°W 31 LINKS)
K-13 [SW COR SEC 36] JOHN BURT, D.S.-1845-WOOD POST (MAPLE 09" N41°E 26 LINKS)(W.PINE 16" N63°W 45 LINKS)

B. Description of corner evidence found and/or method applied in restoring or reestablishing corner:

- H-13 [S1/4 COR SEC 34] FOUND IN PLACE 1" IRON BAR-ID CORNER MONUMENT FROM EXISTING WITNESSES AS LISTED ABOVE.
K-13 [SW COR SEC 36] FOUND IN PLACE A 5/8" X 15" IRON PIN. ID THIS MONUMENT AS BEING THE SAME AS SET BY McNABB IN 1946...



C. Description of monument for corner and accessories established to perpetuate locating the position of the corner:

- H-13 SET, OVER EXISTING MONUMENT, A 5/8" X 18" REBAR W/A 3-1/4" ALUM CAP STAMPED TO ID THE CORNER POSITION.
K-13 SET, OVER EXISTING MONUMENT, A 5/8" X 18" REBAR W/A 3-1/4" ALUM CAP STAMPED TO ID THE CORNER POSITION.

NOTE: BEARINGS TO REFERENCE OBJECTS ARE MAGNETIC-DISTANCES ARE TO A NAIL W/A DELTA COUNTY REFERENCE TAG, UNLESS OTHERWISE NOTED.

Signed by M.P. Davis Date 12/20/99
Surveyor's Michigan License No. 16926