

MICHIGAN  
DEPARTMENT OF CONSERVATION  
FORESTRY DIVISION

# LAND CORNER RECORD

T. 38 N.R. 19W

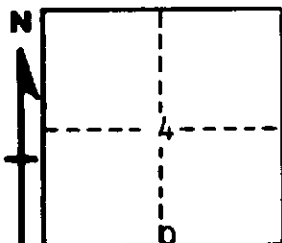
Delta COUNTY

DESCRIPTION OF CORNER 1/4 Corner for sections 4-9

CORNER MONUMENT 5/8" X 36" iron bar buried in road

DATE MONUMENT PLACED AND WITNESSED 9-15-61 with D. St. Curs

WITNESSES TO CORNER..... Fence Corner North 12.4'



18" Hard Maple Twin N24°W 53.0'

28" Hard Maple South 35.4'

AND

CIRCLE CORNER REGISTERED

**DESCRIPTION IN DETAIL AS TO HOW CORNER WAS LOCATED AND IDENTIFIED OR RESTORED.**

This corner was replaced as recorded by Marcus McNabb, county surveyor, in 1916.  
Found stakes in ground under road fill and hard maple NBT bearing South 36.10

Corner is buried in North shoulder of road.

**SURVEYOR'S SEAL**

SIGNED Billy D. Buckler DATE March 14, 1962  
REGISTERED LAND SURVEYOR  
Billy D. Buckler