

MICHIGAN
DEPARTMENT OF CONSERVATION
FORESTRY DIVISION

LAND CORNER RECORD

T. 38 N.R. 19 W

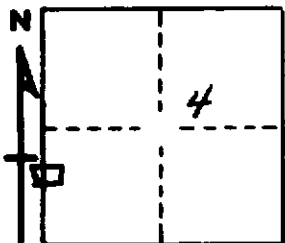
Delta COUNTY

DESCRIPTION OF CORNER SE corner of church parcel in sections 4 and 5

CORNER MONUMENT 1/2" square iron pin at ground level.

DATE MONUMENT PLACED AND WITNESSED 8/22/69, F. J. Bray with B. McDonald

WITNESSES TO CORNER..... 18" Sugar Maple (partially dead) West, 1.0 feet



3" Iron wood S 77° E, 3.4 feet

AND

CIRCLE CORNER REGISTERED

DESCRIPTION IN DETAIL AS TO HOW CORNER WAS LOCATED AND IDENTIFIED OR RESTORED.

This corner was rewitnessed as set by unknown party.

SURVEYOR'S SEAL

SIGNED Frank J. Bray DATE 10/6/69
REGISTERED LAND SURVEYOR
Frank J. Bray