

MICHIGAN  
DEPARTMENT OF CONSERVATION  
FORESTRY DIVISION

# LAND CORNER RECORD

T. 38 N R. 19 W

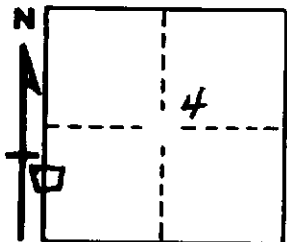
Delta COUNTY

DESCRIPTION OF CORNER SW corner of church parcel in sections 4 and 5

CORNER MONUMENT ½" x 12" reinforcing rod, buried

DATE MONUMENT PLACED AND WITNESSED 8/22/69, F. J. Bray with B. McDonald

WITNESSES TO CORNER..... Easterly edge blacktop road, S 60° W, 24.4 feet



Church sign post, N 70° E, 11.9 feet

AND

CIRCLE CORNER REGISTERED

DESCRIPTION IN DETAIL AS TO HOW CORNER WAS LOCATED AND IDENTIFIED OR RESTORED.

This corner was placed at the recorded distance given from the SE corner of parcel where a square iron pin was found.

SURVEYOR'S SEAL

SIGNED Frank J. Bray DATE 10/6/69  
REGISTERED LAND SURVEYOR  
Frank J. Bray