

SURVEY & REMONUMENTATION

AUG 20 1996

COMMISSION

For corners in
DELTA
(County)

LAND CORNER RECORDATION CERTIFICATE
Filing Requirement of Act 74, Mich. P.A. 1970

Approved By Delta County
Land Survey Remonumentation
Peer Group Under Act 345 Of
P.A. Of 1990 On June 27, 1996
Robert R. Holmberg
Acting Chairman

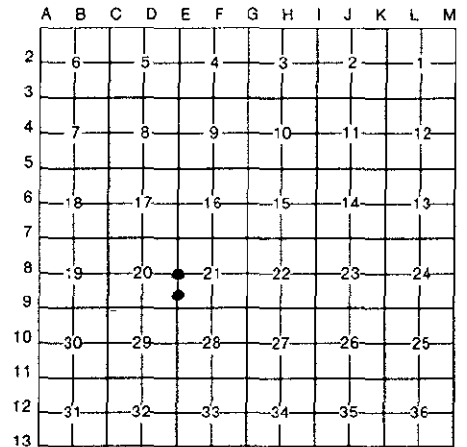
	Located In:	Corner Code #
1. Public Land Survey	T 38 N R 23 W	MC E-8/9
	T _____ R _____	
	T _____ R _____	
	T _____ R _____	
2. Property Controlling in Section	S _____ T _____ R _____	
	S _____ T _____ R _____	
3. Miscellaneous Property in Sec.	S _____ T _____ R _____	
	S _____ T _____ R _____	

Recorded 28 June 1996
9:00 A.M. at _____ o'clock in Liber 8 Page 140
William C. Thum Reg. of Deeds.
Delta County, Michigan
Register of Deeds Stamp & File Number

4. Lot No. _____, Recorded Plat _____
5. Private Claims E-8 [W1/4 COR 21] E-8/9 [MC COR AT LAKE MICHIGAN]

I, M.P. DAVIS, in a field survey on MAY, 1996, do hereby certify that under requirements of P.A. 74, Michigan P.A. of 1970, the corner points mentioned in lines 1 and 2 above were in conformance with regulations and rules therefore as required in the current manual of survey instructions of the United States Department of the Interior, Bureau of Land Management or by a decree of a Court of Law and/or that the corner points mentioned in lines 3, 4 and 5 above were in conformance with the rules of the Michigan Board of Land Surveyors or by a Decree of a Court of Law; established, re-established, monumented, re-monumented, recovered, found as expressed below:

NOTE: Not more than 4 corners, all in the same town and range, may be recorded on this certificate.



A. Description of original monument and accessories and/or subsequent restoration:
E-8 [W1/4 COR S.21] WOOD POST - A.MERRYWEATHER, D.S. - 1847 (CEDAR 12"-S37°W-19 LINKS) (CEDAR 07"-N85°E-13 LINKS)
NO RECORD EVIDENCE OF CORNER RECOVERY OR SUBSEQUENT MONUMENTATION
1928 RECORDS OF M.S.McNABB'S MENTION C1/4 COR. OF SEC. 21 AS BEING 2640' EAST OF 1/4 COR., NO OTHER REFERENCES MADE
E-8/9 [MC COR AT LAKE MICH.] WOOD POST - A.MERRYWEATHER, D.S. - 1847 (DEAD TAMARACK 08"-W65°W-14 LINKS)
NO RECORD EVIDENCE OF CORNER RECOVERY OR SUBSEQUENT MONUMENTATION

B. Description of corner evidence found and/or method applied in restoring or reestablishing corner:
E-8 [W1/4 COR S.21] NO CORNER EVIDENCE FOUND - FOUND IN PLACE M.S.McNABB'S IRON BOLT SET FOR THE CW1/16 OF SEC. 21 (ALSO BEING THE NW COR OF SUPERVISOR'S PLAT NO. 3 OF FORD RIVER TOWNSHIP & REC'D IN LIBER "B" OF PLATS ON PAGE 54. EXTENDED LINE WEST FROM C1/4 COR OF SEC. 21 THRU McNABB'S CW1/16 AND ESTABLISHED THE 1/4 COR ON THIS LINE & AT PROPORTIONATE DISTANCE WEST OF THE CW1/16. C1/4 COR TO CW1/16 (R) 1320.0' (M) 1319.18' CW1/16 TO W1/14 COR (R) 1320' (M) 1319.18'



E-8/9 [MC AT LAKE MICH.] NO CORNER EVIDENCE OR ACCESSORIES FOUND AS LAKE SHORE HAS BEEN LANDSCAPED FOR RESIDENTIAL PURPOSES, NO OCCUPATION EXIST THAT MIGHT INDICATE THE LOCATION OF THE MC OR THE SEC LINE SOUTH FROM THE 1/4 COR. ATTEMPTS TO EST MC DUE SOUTH THE "GLO" DISTANCE FROM THE 1/4 COR TO THE NORTH WERE REJECTED AS THIS WOULD PLACE THE MC SOME 100' NORTH OF THE PRESENT SHORE & WOULD NOT FIT WITH THE "GLO" B'RING & DIST TO THE MC BETW SEC'S 20/29. EST MC POSITION BY USING THE "GLO" B'RING & DIST (N50°E-2.5 CHS) FROM THE MC BETW SEC'S 20/29 AS THIS BEST FITS THE "GLO" STREAM X-ING BETWEEN THE TWO MC'S AND THE LAKE MICHIGAN SHORE LINE. THIS POSITION GIVES AN ACCEPTABLE B'RING OF N.0°14'05"E. TO THE 1/4 COR BUT IS 94.57' LONGER THAN THE "GLO" DISTANCE FROM THE 1/4 CORNER.

C. Description of monument for corner and accessories established to perpetuate locating the position of the corner:

E-8 SET BERNTSEN AINB30 ALUMN MON W/A 3 1/4" CAP STAMPED TO ID THE CORNER POSITION.
SPRUCE 10" CEDAR 6" CEDAR 8" CEDAR 9" SURVEY MONUMENT SIGN POST
N70°W N62°E S40°E S36°W SOUTH
6.35' 9.18' 11.82' 17.56' 1.88' (TO FACE)

E-8/9 SET BERNTSEN AINB30 ALUMN MON W/A 3 1/4" CAP STAMPED TO ID THE CORNER POSITION.
ASH 7" SURVEY MONUMENT SIGN POST NOTE: NO OTHER WIT'S AVAILABLE AS LAKE SHORE HAS BEEN LANDSCAPED FOR RESIDENTIAL PURPOSES.
N32°W WEST
28.97' 2.48' (TO FACE)

NOTE: BEARINGS TO REFERENCE OBJECTS ARE MAGNETIC - DISTANCES ARE TO A NAIL IN THE CENTER OF THE OBJECT UNLESS NOTED OTHERWISE

Signed by M.P. Davis Date 6/19/96

Surveyor's Michigan License No. 16926