

**SURVEY &
REMONUMENTATION**

AUG 20 1996

COMMISSION

LAND CORNER RECORDATION CERTIFICATE
Filing Requirement of Act 74, Mich. P.A. 1970

Approved By Delta County
Land Survey Remonumentation
Peer Group Under Act 345 Of
P.A. Of 1990 On June 27, 1996
Robert Schmeling
acting Chairman

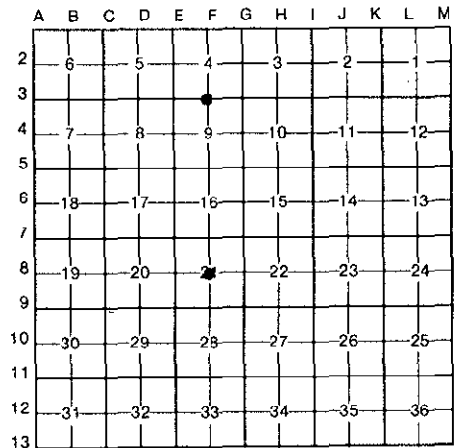
For corners in
DELTA

Located In: Corner Code #

1. Public Land Survey	T 38 N R 23 W	F-3
	T R	
	T R	
	T R	
2. Property Controlling in Section	S T R	
	S T R	
3. Miscellaneous Property in Sec.	S T R	
	S T R	

Recorded 28 June 1996
9:00 A.M. in Liber 8 Page 139
William C. Thomas Reg. of Deeds.
Delta County, Michigan
Register of Deeds Stamp & File Number

4. Lot No. _____, Recorded Plat _____
5. Private Claims F-3 [1/4 COR 9] F-8 [1/4 COR S.21]

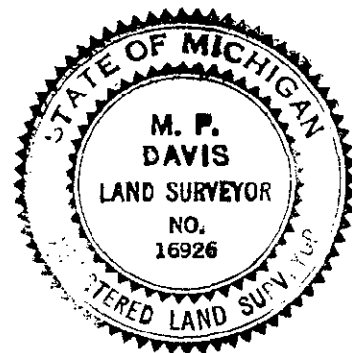


I, M.P. DAVIS, in a field survey on MAY/MARCH, 19 96, do hereby certify that under requirements of P.A. 74, Michigan P.A. of 1970, the corner points mentioned in lines 1 and 2 above were in conformance with regulations and rules therefore as required in the current manual of survey instructions of the United States Department of the Interior, Bureau of Land Management or by a decree of a Court of Law and/or that the corner points mentioned in lines 3, 4 and 5 above were in conformance with the rules of the Michigan Board of Land Surveyors or by a Decree of a Court of Law; established, re-established, monumented, re-monumented, recovered, found as expressed below:

NOTE: Not more than 4 corners, all in the same town and range, may be recorded on this certificate.

- A. Description of original monument and accessories and/or subsequent restoration:
 F-3 [1/4 COR S.9] WOOD POST - A.MERRYWEATHER, D.S. - 1847 (NORWAY PINE 07'-N46°W-15' LINKS) (HEMLOCK 06"-S40°E-10 LINKS)
 M.S.McNABB-1923-ID FROM ORIG N.PINE BT & NOTED FOLLOWING NEW BT (NORWAY STUB 10" N8°E 23.3')
 M.DAVIS-1970-RESTORED COR (1' X 24" IRON BAR) POSITION FROM TRANSIT & TAPE RETRACEMENT OF McNABB'S 1923 RETRACEMENT OF THE NORTH LINE OF SEC. 9 & NOTED NEW BT'S (W.PINE 22" S44°W 34.22')(PP #31 N65°W 76.88')(PP#37 N73°E 90.12')(HEMLOCK 10" S15°E 31.55) AND REC'D SAME IN LIBER 4 OF LCR'S ON PG 176
 G.CARLSON-1979-FD. IRON BAR IN MON BOX & NOTED NEW BT'S (HEMLOCK 9" S11°E 31.25)(HEMLOCK 15" S3°W 28.41')(W.PINE 23" S40°W 34.37') REC'D SAME IN LIBER 2 OF LCR'S ON PG 265
 F-8 [1/4 COR S.21] NOT ESTABLISHED IN ORIGINALS
 M.S.McNABB-1928-FOUND SCRIBED POST IN FIELD 2640' EAST OF 1/4 COR-SET IRON STAKE (CEDAR 8"-NORTH-50')(CEDAR 10"-N13°E-62.3')
 R.SCHMELING RLS-1980-FD McNABB'S I.P. & SET I.P. W/A BRASS CAP OVER SAME (CEDAR 11"-N7°E-62.3')(CEDAR 8"-N34°W-47.9')
- B. Description of corner evidence found and/or method applied in restoring or reestablishing corner:
 F-3 [1/4 COR S9] ID CORNER MONUMENT AS MENTIONED ABOVE FROM BOTH SE & SW BT'S STILL GREEN. ACCEPTED EXISTING MONUMENT AS BEING A CAREFUL & FAITHFUL PERPETUATION OF THE POSITION OF THE ORIGINAL CORNER.

F-8 [1/4 COR S.21] FOUND IN PLACE SCHMELING'S 1980 MONUMENT. ID CORNER MONUMENT FROM McNABB'S CEDAR BT TO THE NORTH AND SCHMELING'S 1980 BT'S, STILL GREEN.



- C. Description of monument for corner and accessories established to perpetuate locating the position of the corner:
 F-3 SET OVER EXISTING MON & INSIDE MON BOX A 5/8" X 18" REBAR W/A 3 1/4" ALUMN CAP STAMPED TO ID THE CORNER POSITION.
 W.PINE 24" (OLD BT) HEMLOCK 11" (OLD BT) SURVEY MONUMENT SIGN POST
 S44°W S15°E NORTH
 34.28' 31.69' 34.82' (TO FACE)

F-8 DID NOT DISTURB EXISTING MONUMENT
 CEDAR 8" SPRUCE 12" SURVEY MONUMENT SIGN POST
 NORTH S47°E EAST
 51.31' 40.02' 2.84' (TO FACE)

NOTE: BEARINGS TO REFERENCE OBJECTS ARE MAGNETIC-DISTANCES ARE TO A NAIL IN THE CENTER OF THE OBJECT UNLESS NOTED OTHERWISE

Signed by M.P. Davis Date 6/19/96
 Surveyor's Michigan License No. 16926