

FEB 22 1996

COMMISSION

LAND CORNER RECORDATION CERTIFICATE
Filing Requirement of Act 74, Mich. P.A. 1970

Approved By Delta County Land Survey Remonumentation Peer Group Under Act 345 Of P.A. Of 1990 On December 30 1993
Chairman

For corners in DELTA (County)

Located In: Corner Code #

DELTA COUNTY

LIBER 7 PAGE 329

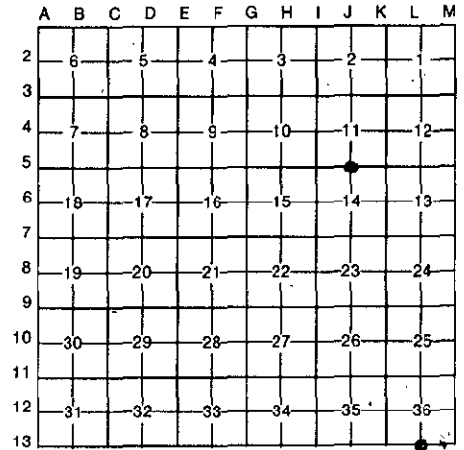
93 DEC -2 AM 9:00

Walker A. Thoren REGISTER OF DEEDS

Register of Deeds Stamp & File Number

- 1. Public Land Survey T 39 N R 23 W J-5 & L-13 L-1
2. Property Controlling in Section S T R
3. Miscellaneous Property in Sec. S T R

- 4. Lot No. Recorded Plat
5. Private Claims J-5 [1/4 COR COMMON TO SEC'S 11/14] L-13 [S1/4 COR SEC 36] SAME AS L-1 T39N R23W

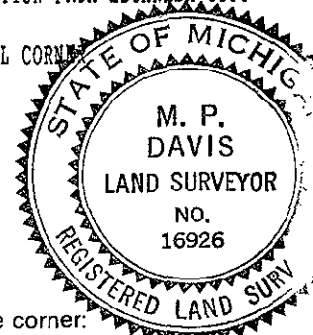


I, N.P. DAVIS, in a field survey on AUGUST, 19 93, do hereby certify that under requirements of P.A. 74, Michigan P.A. of 1970, the corner points mentioned in lines 1 and 2 above were in conformance with regulations and rules therefore as required in the current manual of survey instructions of the United States Department of the Interior, Bureau of Land Management or by a decree of a Court of Law and/or that the corner points mentioned in lines 3, 4 and 5 above were in conformance with the rules of the Michigan Board of Land Surveyors or by a Decree of a Court of Law; established, re-established, monumented, re-monumented, recovered, found as expressed below:

NOTE: Not more than 4 corners, all in the same town and range, may be recorded on this certificate.

- A. Description of original monument and accessories and/or subsequent restoration:
J-5 [1/4 COR COMMON TO SEC'S 11/14] WOOD POST - A. MERRYWEATHER - 1846 (BEECH 12"-EAST-10 LINKS) (HEMLOCK 12"-WEST-16 LINKS)
M.S. McNABB - 1915 - NO ORIGINALS FOUND - ESTABLISHED 1/2 DIST BETWEEN COR'S (COR FENCE POST-N2°30'E-24.3') (PINE STUMP 38"-S16°30'E-24.3')
T.P. O'BRIEN - 1978 - FOUND I.P. IN PLACE - L.C.R.'S. IN LIBER 2 PAGE 208
L-13 [S1/4 COR SEC 36] WOOD POST - JOHN BURT - 1844 (TAMARACK 3"-N42°E-6 LINKS) (TAMARACK 4"-N24°W-24 LINKS)
M.S. McNABB - 1936 - CONC MONUMENT IN PLACE - NO WIT'S. NOTED
G. CARLSON - 1979 - 1" IRON BOLT IN PLACE - L.C.R.'S. IN LIBER 2 PAGE 266

- B. Description of corner evidence found and/or method applied in restoring or reestablishing corner:
J-5 [1/4 COR COMMON TO SEC'S 11/14] FOUND IRON PIPE AS NOTED IN L.C.R.'S. LIBER 2 PAGE 208
ACCEPTED CORNER MONUMENT AS BEING A CAREFUL & FAITHFUL REESTABLISHMENT OF THE POSITION OF THE ORIGINAL CORNER
L-13 [S1/4 COR SEC 36] IDENTIFIED 1" IRON BOLT AS DESCRIBED IN L.C.R.'S. LIBER 2 PAGE 266 AND VERIFIED POSITION FROM ESCANABA CITY ENGINEER'S RECORDS.
ACCEPTED CORNER MONUMENT AS BEING A CAREFUL & FAITHFUL REESTABLISHMENT OF THE POSITION OF THE ORIGINAL CORNER



- C. Description of monument for corner and accessories established to perpetuate locating the position of the corner:
J-5 EXISTING I.P. MONUMENT BENT & IN POOR CONDITION APPARENTLY FROM NEW ROAD CONSTRUCTION-REPLACE W/A 5/8" X 18" REBAR & RAISED TO ROAD SURFACE W/A MONUMENT BOX
POWER POLE MAPLE 13" J. PINE 10" RED PINE 6" SURVEY MONUMENT SIGN POST
N29°W N5°E S51°E S54°W SOUTH
29.05' 47.50' 51.30' 41.00' 18.30' (TO FACE)

- L-13 SET, OVER EXISTING MONUMENT, A BERNTSEN ALNB30 ALUMN MONUMENT W/A CAP STAMPED TO ID THE CORNER POSITION
LITE POLE MAPLE 4" WILLOW 12" SURVEY MONUMENT SIGN POST
N28°W N18°E S35°E SOUTH
67.35' 60.00' 9.78' 2.83' (TO FACE)

NOTE: BEARINGS TO REFERENCE OBJECTS ARE MAGNETIC & DISTANCE ARE TO A NAIL IN THE CENTER OF THE OBJECT UNLESS NOTED OTHERWISE

Signed by M.P. Davis Date M.P. Davis
Surveyor's Michigan License No. 16926