

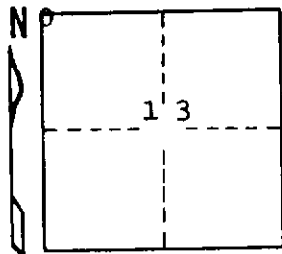
STATE OF MICHIGAN  
DEPARTMENT  
OF  
NATURAL RESOURCES

LAND CORNER RECORD

Delta COUNTY

T 38 N R 23 W

DESCRIPTION OF CORNER Section corner for sections  $\frac{11}{12}$   $\frac{14}{13}$   
CORNER MONUMENT 1" iron pipe with 3" brass cap stamped RLS.8317  
1966  
DATE MONUMENT PLACED AND WITNESSED 5/7/69, F. J. Bray  
WITNESSES TO CORNER..... Fence corner, West, 2.5 feet



South edge culvert headwall, N 14° E, 51.0 feet

AND

CIRCLE CORNER REGISTERED

DESCRIPTION IN DETAIL AS TO HOW CORNER WAS LOCATED AND IDENTIFIED OR RESTORED.

This corner was set by unknown party. Witness monument, 1½" iron pipe with brass cap, set 100.0 feet east of section corner.

SURVEYOR'S SEAL

SIGNED Frank J. Bray DATE 6/25/69  
REGISTERED LAND SURVEYOR  
Frank J. Bray

DISTRIBUTION:

County Courthouse  
Area Forester (Regions I & II)  
District or Region Surveyor  
Forestry Div., Lansing

R 4047  
Rev. 10/68