

STATE OF MICHIGAN
DEPARTMENT
OF
NATURAL RESOURCES

LAND CORNER RECORD

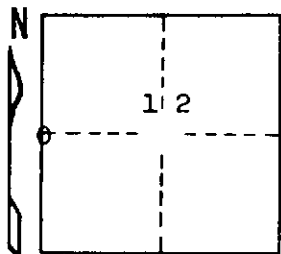
Delta COUNTY
T 38 N R 23 W

DESCRIPTION OF CORNER 1/4 corner for sections 11/12

CORNER MONUMENT Iron pin set 1.0 foot east of edge of pavement of M-35.

DATE MONUMENT PLACED AND WITNESSED 5/17/69, F. J. Bray

WITNESSES TO CORNER..... Power pole S. 29° E, 32.0 feet



18" Hemlock (Blazed) N 59° E, 41.2 feet

1/2" iron rod N 88° E, 37.3 feet

AND

CIRCLE CORNER REGISTERED

DESCRIPTION IN DETAIL AS TO HOW CORNER WAS LOCATED AND IDENTIFIED OR RESTORED.

This corner was re-witnessed as set by unknown party. Monument 1 1/2" iron pipe with brass cap marked 1/4 SC 11 and 12 T38N R23W. Not good is N 29° E, 62.55' from pin at 1/4 corner.

SURVEYOR'S SEAL

DISTRIBUTION:

SIGNED

Frank J. Bray
REGISTERED LAND SURVEYOR
Frank J. Bray

DATE

6/25/69

County Courthouse
Area Forester (Regions I & II)
District or Region Surveyor
Forestry Div., Lansing

R 4047
Rev. 10/68