

STATE OF MICHIGAN  
DEPARTMENT  
OF  
NATURAL RESOURCES

LAND CORNER RECORD

Delta COUNTY

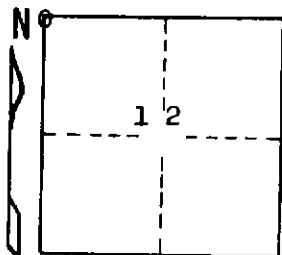
T 38 N R 23 W

DESCRIPTION OF CORNER Section corner for sections  $\frac{2}{1}$   
11/12

CORNER MONUMENT Spike in blacktop over object which attracts needle.

DATE MONUMENT PLACED AND WITNESSED 5/18/69, F. J. Bray

WITNESSES TO CORNER..... Power pole marked (B.P.) N 41° E, 48.2 feet



Telephone pole, S 73° E, 95.0 feet

1½ iron pipe, S 03° W, 33.1 feet

AND

CIRCLE CORNER REGISTERED

DESCRIPTION IN DETAIL AS TO HOW CORNER WAS LOCATED AND IDENTIFIED OR RESTORED.

Local resident claims this to be the section corner.

SURVEYOR'S SEAL

DISTRIBUTION:

SIGNED

Frank J. Bray  
REGISTERED LAND SURVEYOR  
Frank J. Bray

DATE

6/25/69

County Courthouse  
Area Forester (Regions I & II)  
District or Region Surveyor  
Forestry Div., Lansing

R 4047  
Rev. 10/68