

SURVEY & MONUMENTATION

OCT 26 1995

COMMISSION

LAND CORNER RECORDATION CERTIFICATE
Filing Requirement of Act 74, Mich. P.A. 1970

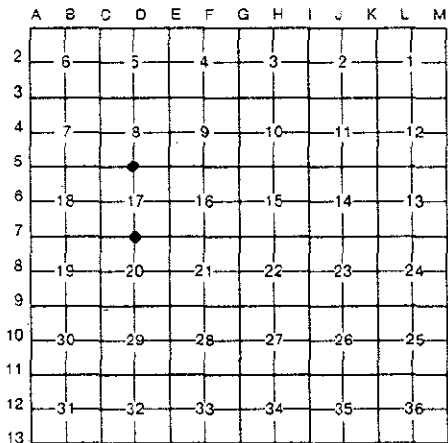
Approved by Delta County
Land Survey Remonumentation
Peer Group Under Act 345 Of
P.A. Of 1990 On June 6, 1995
Phyllis Helmelung
Acting Chairman

For corners in

DELTA (County)	Located In:	Corner Code ##
1. Public Land Survey	T <u>38</u> N R <u>24</u> W	D-5 <u>D-7</u>
	T _____ R _____	_____
	T _____ R _____	_____
	T _____ R _____	_____
2. Property Controlling in Section	S _____ T _____ R _____	_____
	S _____ T _____ R _____	_____
3. Miscellaneous Property in Sec.	S _____ T _____ R _____	_____
	S _____ T _____ R _____	_____

Recorded IN 13 1995
at 9:00 o'clock A.M. in Liber 8 Page 79
Delta County, Michigan
Register of Deeds Stamp & File Number

4. Lot No. _____, Recorded Plat _____
5. Private Claims _____
D-5 [N1/4 COR S.17] D-7 [N1/4 COR S.20]



I, M.P. DAVIS, in a field survey on MAY, 19 95, do hereby certify that under requirements of P.A. 74, Michigan P.A. of 1970, the corner points mentioned in lines 1 and 2 above were in conformance with regulations and rules therefore as required in the current manual of survey instructions of the United States Department of the Interior, Bureau of Land Management or by a decree of a Court of Law and/or that the corner points mentioned in lines 3, 4 and 5 above were in conformance with the rules of the Michigan Board of Land Surveyors or by a Decree of a Court of Law; established, re-established, monumented, re-monumented, recovered, found as expressed below:

NOTE: Not more than 4 corners, all in the same town and range, may be recorded on this certificate.

A. Description of original monument and accessories and/or subsequent restoration:

D-5 [N1/4 COR S.17] GEORGE ADAIR, D.S. - WOOD POST - 1852- (Y. BIRCH 10°-N22°E-14 LINKS) (CEDAR 14°-S15°W-10 LINKS) 1884 RECORDS OF C.E. BROTHERTON SHOW CORNER IN PLACE-NO WIT'S NOTE OR DESCRIPTION OF EXISTING MONUMENT GIVEN M.DAVIS-1974-SET TRACK SPIKE-ESTABLISHED CORNER POSITION FROM EXISTING LINES OF OCCUPATION & IMPROVEMENTS (TWIN CEDAR 14°-S44°W-65.0') (POWER POLE-S11°E-29.1')

D-7 [N1/4 COR S.20] WOOD POST - GEORGE ADAIR, D.S. - 1852 (CEDAR 16°-N38°W-17 LINKS) (LYNN 11°-S10°E-32 LINKS) 1884 RECORDS OF C.E. BROTHERTON SHOW CORNER IN PLACE-NO WIT'S NOTE OR DESCRIPTION OF EXISTING MONUMENT GIVEN

B. Description of corner evidence found and/or method applied in restoring or reestablishing corner:

D-5 [N1/4 COR S.17] RECOVERED MONUMENT AS ESTABLISHED IN 1974 BY MYSELF, ID SAME FROM CEDAR BY SW WHICH IS STILL GREEN. SEC. 17 WAS SUBDIVIDED BY C.E. BROTHERTON IN 1884. DISTANCES TO EXISTING FARM FENCES & ROAD IMPROVEMENTS CHECK WELL WITH BROTHERTON'S RECORDS. ACCEPTED EXISTING LINES OF OCCUPATION AS BEING INDICATIVE OF THE CORNER POSITIONS FOUND OR ESTABLISHED BY BROTHERTON. ACCEPTED AS BEING THE BEST AVAILABLE EVIDENCE AS TO THE LOCATION OF THE POSITION OF THE ORIGINAL CORNER.

D-7 [N1/4 COR S.20] FOUND IN PLACE A 1/2" IRON PIN AT THE JCT. OF COUNTY ROADS E-W AND S AND FENCE LINE TO THE NORTH. THIS POSITION FITS WELL WITH EXISTING OCCUPATION & CORRESPONDS WITH C.E. BROTHERTON'S 1884 SUBDIVISION OF SEC 17. ACCEPTED EXISTING MONUMENT AS BEING THE BEST AVAILABLE EVIDENCE AS TO THE POSITION OF THE ORIGINAL CORNER.



C. Description of monument for corner and accessories established to perpetuate locating the position of the corner:

D-5 REPLACED EXISTING MONUMENT W/A 5/8" X 18" REBAR & A 3 1/4" ALUMN CAP STAMPED TO ID THE CORNER POSITION.

DRILL HOLE IN STONE	TAMARACK 5"	POWER POLE	SURVEY MONUMENT SIGN POST	CEDAR 8"
N51°W	N37°E	S27°E	SOUTH	S31°W
35.24'	57.58'	32.72' (TO FACE)	11.41' (TO FACE)	45.65'

D-7 SET OVER EXISTING MONUMENT A 5/8" X 18" REBAR & A 3 1/4" ALUMN CAP STAMPED TO ID THE CORNER POSITION.

SURVEY MONUMENT SIGN POST	ELM 5"	CEDAR 11"	IN FARM LAND, NO OTHER WIT'S AVAILABLE
NORTH	N67°E	S49°E	
17.90' (TO FACE)	56.70'	75.50'	

NOTE: BEARINGS TO REFERENCE OBJECTS ARE MAGNETIC - DISTANCES ARE TO A NAIL IN THE CENTER OF THE OBJECT UNLESS NOTED OTHERWISE

Signed by M.P. Davis Date 6/3/95
Surveyor's Michigan License No. 16926