

OCT 26 1995

COMMISSION

Approved By Delta County
Land Survey Remonumentation
Peer Group Under Act 345 Of
P.A. Of 1990 On June 6, 1995
John Stelmach
Acting Chairman

LAND CORNER RECORDATION CERTIFICATE
Filing Requirement of Act 74, Mich. P.A. 1970

For corners in DELTA (County)

Located In: Corner Code #

1. Public Land Survey T 38 N R 24 W E-4 [E-5]

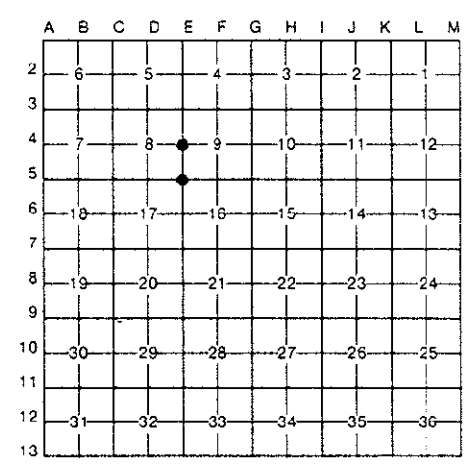
2. Property Controlling in Section S T R

3. Miscellaneous Property in Sec. S T R

4. Lot No. , Recorded Plat

5. Private Claims E-4 [W1/4 COR S.9] E-5 [NW COR S.16]

Recorded JUN 13 1995
9:00 A.M. in Liber 8 Page 81
Delta County, Michigan
Register of Deeds Stamp & File Number



I, M.P. DAVIS in a field survey on MARCH/MAY 19 95
do hereby certify that under requirements of P.A. 74, Michigan P.A. of 1970, the corner points mentioned in lines 1 and 2 above were in conformance with regulations and rules therefore as required in the current manual of survey instructions of the United States Department of the Interior, Bureau of Land Management or by a decree of a Court of Law and/or that the corner points mentioned in lines 3, 4 and 5 above were in conformance with the rules of the Michigan Board of Land Surveyors or by a Decree of a Court of Law, established, re-established, monumented, re-monumented, recovered, found as expressed below:

NOTE: Not more than 4 corners, all in the same town and range, may be recorded on this certificate.

A. Description of original monument and accessories and/or subsequent restoration:
E-4 [W1/4 COR S.9] WOOD POST - GEORGE ADAIR, D.S. - 1852 - (CEDAR 10"-N60°W-15 LINKS) (SPRUCE 11"-S58°E-30 LINKS)
M.DAVIS-1976-FOUND 1" I.P. & SQ'D CEDAR POST IN PLACE -FROM TESTIMONY OF MR. LOUIS WANGLES WHO STATES HE HAS OWNED PROPERTY ADJOINING THIS CORNER FOR 45 YEARS & THE EXISTING CORNER MONUMENT HAS BEEN IN PLACE SINCE HIS OWNERSHIP AND HAS ALWAYS BEEN RECOGNIZED AS THE CORNER. REC'D. LIBER 2 OF LCR'S ON PAGE 127 (BIRCH S90°W-20.8') (CEDAR S10°E-16.8')

E-5 [NW COR S.16] WOOD POST - GEORGE ADAIR, D.S. - 1852 (CEDAR 18"-N41°E-42 LINKS) (CEDAR 14"-S32°W-13 LINKS)
1882 RECORDS OF C.E. BROTHERTON SHOW CORNER IN PLACE - NO DESCRIPTION OF MONUMENT GIVEN OR BT'S NOTED.

B. Description of corner evidence found and/or method applied in restoring or reestablishing corner:
E-4 [W1/4 COR S.9] FOUND IN PLACE 1" I.P. & REMAINS OF CEDAR POST AS RECOVER BY MYSELF IN 1976.
BOTH BT'S AS NOTED ARE STILL GREEN. ACCEPTED EXISTING MONUMENT AS BEING THE BEST AVAILABLE EVIDENCE AS TO THE POSITION OF THE ORIGINAL CORNER.



E-5 [NW COR S.16] NO CORNER EVIDENCE FOUND AS SHOWN IN THE 1882 RECORDS OF C.E. BROTHERTON.
EXTENDED LINE EAST FROM N1/4 COR. SEC 17 THRU THE E1/16 COR. ON LINE BETWEEN SEC'S 8/17 AS IDENTIFIED BY THE COR FENCE POST AT THE JCT. OF FENCE LINES E-W & SOUTH, AND ESTABLISHED THE SEC CORNER ON THIS LINE & AT A PROPORTIONATE DISTANCE EAST OF THE E1/16 COR. ACCEPTED THIS POSITION AS BEING THE BEST AVAILABLE EVIDENCE AS TO THE POSITION OF THE ORIGINAL CORNER.

C. Description of monument for corner and accessories established to perpetuate locating the position of the corner:
E-4 SET, OVER EXISTING MONUMENT, A BERNTSEN A1NB30 ALUMN MON WITH THE CAP STAMPED TO ID THE CORNER POSITION.
CEDAR 5" N42°E 35.68' CEDAR 7" S57°E 28.42' CEDAR 8" S19°E 16.78' W.BIRCH 9" S80°W 20.65' SURVEY MONUMENT SIGN POST NORTH 2.50' (TO FACE)

E-5 SET BERTINSEN A1NB30 ALUMN MON WITH THE CAP STAMPED TO ID THE CORNER POSITION.
CEDAR 11" N25°W 33.11' W.BIRCH 6" N38°E 46.70' W.BIRCH 11" S47°E 23.85' CEDAR 11" S35°W 13.10' SURVEY MONUMENT SIGN POST NORTH 2.23' (TO FACE)

NOTE: BEARINGS TO REFERENCE OBJECTS ARE MAGNETIC - DISTANCES ARE TO A NAIL IN THE CENTER OF THE OBJECT UNLESS NOTED OTHERWISE

Signed by M.P. Davis Date 6/3/95
Surveyor's Michigan License No. 16926