

OCT 26 1995

COMMISSION

Approved by Delta County
Land Survey Remonumentation
Peer Group Under Act 345 Of
P.A. Of 1990 On June 6, 1995
[Signature]
Chairman

LAND CORNER RECORDATION CERTIFICATE
Filing Requirement of Act 74, Mich. P.A. 1970

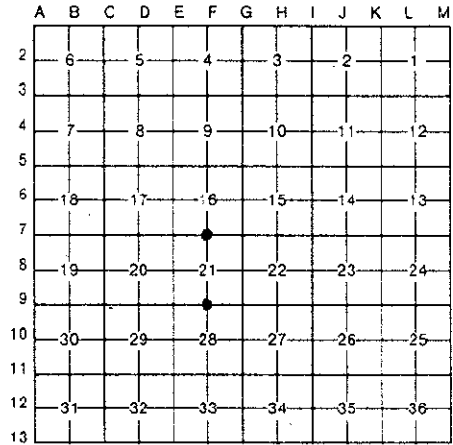
For corners in
DELTA
(County)

Located In: Corner Code #

| | | |
|------------------------------------|-----------------------------|------------------|
| 1. Public Land Survey | T <u>38</u> N R <u>24</u> W | F-7 <u>(F-9)</u> |
| | T _____ R _____ | _____ |
| | T _____ R _____ | _____ |
| | T _____ R _____ | _____ |
| 2. Property Controlling in Section | S _____ T _____ R _____ | _____ |
| | S _____ T _____ R _____ | _____ |
| 3. Miscellaneous Property in Sec. | S _____ T _____ R _____ | _____ |
| | S _____ T _____ R _____ | _____ |

Recorded JUN 13 1995
9:00 A.M. 8 Page 85
at _____ o'clock in _____
[Signature]
Delta County, Michigan
Register of Deeds Stamp & File Number

4. Lot No. _____, Recorded Plat _____
5. Private Claims F-7 [N1/4 COR S.21] F-9 [N1/4 COR S.28]



I, M.P. DAVIS, in a field survey on MAY, 19 95, do hereby certify that under requirements of P.A. 74, Michigan P.A. of 1970, the corner points mentioned in lines 1 and 2 above were in conformance with regulations and rules therefore as required in the current manual of survey instructions of the United States Department of the Interior, Bureau of Land Management or by a decree of a Court of Law and/or that the corner points mentioned in lines 3, 4 and 5 above were in conformance with the rules of the Michigan Board of Land Surveyors or by a Decree of a Court of Law; established, re-established, monumented, re-monumented, recovered, found as expressed below:

NOTE: Not more than 4 corners, all in the same town and range, may be recorded on this certificate.

A. Description of original monument and accessories and/or subsequent restoration:

F-7 [N1/4 COR S.21] WOOD POST - GEORGE ADAIR, D.S. - 1852 - (TAMARACK 9'-N15°E-14 LINKS) (TAMARACK 9'-S42°W-28)
NO RECORD EVIDENCE OF SUBSEQUENT CORNER RECOVERY OR MONUMENTATION

F-9 [N1/4 COR S.28] WOOD POST - GEORGE ADAIR, D.S. - 1852 (CEDAR 10'-N53°E-10 LINKS) (TAMARACK 12'-S38°W-06 LINKS)
M.S. McNABB-1920-ORIGINALS REMOVED FOR ROAD CONSTRUCTION-SET IRON BOLT & NOTED NEW BT'S (CEDAR STUMP 18'-S45°E-25.7')
(CEDAR STUMP 10'-N20°E-28.6')

B. Description of corner evidence found and/or method applied in restoring or reestablishing corner:

F-7 [N1/4 COR S.21] NO CORNER EVIDENCE FOUND. RESTORED CORNER POSITION FROM ANCIENT FARM OCCUPATION LINES N - S AND COUNTY ROAD IMPROVEMENTS E - W. ACCEPTED THIS POSITION AS BEING THE BEST AVAILABLE EVIDENCE AS TO THE POSITION OF THE ORIGINAL CORNER.

F-9 [N1/4 COR S.28] FOUND IN PLACE A 1" I.P. AT THE APPROX C/L PI OF THE COUNTY ROAD WEST & SOUTH. NO EVIDENCE OF McNABB'S CEDAR STUMP BT FOUND. DISTANCES WEST & EAST TO ADJOINING CORNERS CHECK WELL WITH THE RECORDS OF McNABB. ACCEPTED EXISTING MONUMENT AS BEING THE BEST AVAILABLE EVIDENCE AS TO THE POSITION OF THE ORIGINAL CORNER.



C. Description of monument for corner and accessories established to perpetuate locating the position of the corner:

F-7 SET, 6" BELOW COUNTY ROAD SURFACE, A 5/8" X 18" REBAR W/A 3 1/4" ALUMN CAP STAMPED TO ID THE CORNER POSITION.

| | | | | |
|-----------|--------------|-------------|-------------|---------------------------|
| SPRUCE 7" | RED PINE 12" | W. PINE 13" | TAMARACK 9" | SURVEY MONUMENT SIGN POST |
| N42°W | N50°E | S53°E | S39°W | SOUTH |
| 61.60' | 36.13' | 53.85' | 33.42' | 18.50' (TO FACE) |

F-9 SET, OVER EXISTING MONUMENT, A BERNTSEN ALNB30 ALUMN MONUMENT WITH THE CAP STAMPED TO ID THE CORNER POSITION.

| | | | | |
|----------|----------|------------------|----------|---------------------------|
| CEDAR 7" | CEDAR 6" | POWER POLE | CEDAR 6" | SURVEY MONUMENT SIGN POST |
| N50°W | N07°E | N39°E | S45°E | S65°E |
| 90.35' | 56.32' | 50.56' (TO FACE) | 62.90' | 2.72' (TO FACE) |

NOTE: BEARINGS TO REFERENCE OBJECTS ARE MAGNETIC - DISTANCES ARE TO A NAIL IN THE CENTER OF THE OBJECT UNLESS NOTED OTHERWISE

Signed by M.P. Davis

Date 6/3/95

Surveyor's Michigan License No. 16926