

FEB 22 1996

COMMISSION

Approved By Delta County Land Survey Remonumentation Peer Group Under Act 345 Of P.A. Of 1990 On 1/17, 1996  
*Robert Schmelting*  
Acting Chairman

LAND CORNER RECORDATION CERTIFICATE  
Filing Requirement of Act 74, Mich. P.A. 1970

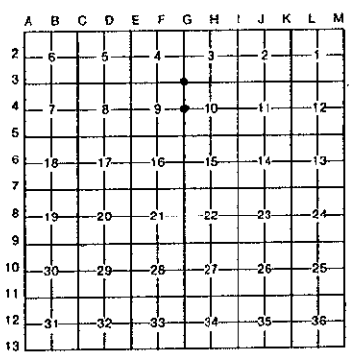
For corners in DELTA (County) Located in: Corner Code #

1. Public Land Survey	T 38 N R 24 W	G-3 or G-4
	T R	
	T R	
	T R	
2. Property Controlling in Section	S T R	
	S T R	
3. Miscellaneous Property in Sec.	S T R	
	S T R	

4. Lot No. \_\_\_\_\_, Recorded Plat \_\_\_\_\_  
5. Private Claims \_\_\_\_\_  
G-3 [NW COR S.10] G-4 [W1/4 COR S.10]

Recorded Jan 18 1996  
at 9:00 o'clock AM in Liber 8 Page 120  
Walter C. Flann Reg. of Deeds.  
Delta County, Michigan

Register of Deeds Stamp & File Number



I, M.P. DAVIS, in a field survey on 6/94 & 12/95, 19\_\_\_\_, do hereby certify that under requirements of P.A. 74, Michigan P.A. of 1970, the corner points mentioned in lines 1 and 2 above were in conformance with regulations and rules therefore as required in the current manual of survey instructions of the United States Department of the Interior, Bureau of Land Management or by a decree of a Court of Law and/or that the corner points mentioned in lines 3, 4 and 5 above were in conformance with the rules of the Michigan Board of Land Surveyors or by a Decree of a Court of Law, established, re-established, monumented, re-monumented, recovered, found as expressed below:

NOTE: Not more than 4 corners, all in the same town and range, may be recorded on this certificate.

A. Description of original monument and accessories and/or subsequent restoration:  
G-3 [NW COR S.10] GEORGE ADAIR, D.S. - 1852 - WOOD POST - (BEECH 13'-N31'W-12 LINKS) (BEECH 10'-S10'W-17)  
M.S. McNABB-1940-FOUND IRON STAKE IN PLACE-IDENTIFIED FROM COUNTY ROAD COMMISSION NOTES (COUNTY ROAD POST B-2-SE 41.8') (TELE POLE-SW-29')  
F. BRAY-N.D.N.R.-1973-FOUND 1" IRON PIPE IN PLACE (APPLE 3'-S4'W-24.25') (APPLE 9'-N72'E-77.3') (POWER POLE-N51'E-46.2') REC'D. IN LIBER 1 OF LCR'S ON PAGE 359

G-4 [W1/4 COR S.10] GEORGE ADAIR, D.S. - 1852 - WOOD POST - (TANARACK 10'-N55'W-07 LINKS) (CEDAR 06' -S63'E-16 LINKS) NO RECORD EVIDENCE OF SUBSEQUENT CORNER RECOVERY OR MONUMENTATION

B. Description of corner evidence found and/or method applied in restoring or reestablishing corner:  
G-3 [NW COR S.10] FOUND IRON PIPE IN PLACE AS MENTIONED ABOVE, ID MONUMENT FROM FRANK BRAY'S APPLE BY NE & HIS PP BY NE, NOW CUT OFF. ACCEPTED EXISTING MONUMENT AS BEING THE BEST AVAILABLE EVIDENCE AS TO THE LOCATION OF THE POSITION OF THE ORIGINAL CORNER.  
G-4 [W1/4 COR S.10] NO CORNER EVIDENCE FOUND. CORNER POSITION IS OCCUPIED BY CORNER FENCE POST WITH 5 STRAND BARBED WIRE FENCE E-W & N. CORNER FENCE POST IS 3.07' EAST & 11.68' NORTH OF THE MIDPOINT BETWEEN SECTION CORNERS NORTH & SOUTH. BECAUSE OF THE EXTENSIVE RECOGNITION OF EXISTING OCCUPATION I HAVE ACCEPTED THE EXISTING CORNER POST AS BEING THE BEST AVAILABLE EVIDENCE AS TO THE LOCATION OF THE POSITION OF THE ORIGINAL CORNER.



C. Description of monument for corner and accessories established to perpetuate locating the position of the corner:  
G-3 PLACED INSIDE EXISTING I.P. A 5/8" X 18" REBAR W/A 3/4" ALUMN CAP STAMPED TO ID THE CORNER POSITION.  
POWER POLE SPRUCE 5" WILLOW 17" SURVEY MONUMENT SIGN POST  
N49'W N47'E S65'E NORTH  
45.65' (TO FACE) 44.83' 70.46' 26.04' (TO FACE)  
G-4 REPLACE CORNER FENCE POST W/A BERNTSEN AINB30 ALUMN NON. W/A 3/4" ALUMN CAP STAMPED TO ID THE CORNER POSTION.  
CEDAR 4" CEDAR 4" CEDAR 5" CEDAR 4" SURVEY MONUMENT SIGN POST  
N40'W N50'E S45'E S15'W WEST  
15.62' 7.58' 4.62' 10.91' 2.32' (TO FACE)

NOTE: BEARINGS TO REFERENCE OBJECTS ARE MAGNETIC - DISTANCES ARE TO A NAIL IN THE CENTER OF THE OBJECT UNLESS NOTED OTHERWISE

Signed by M.P. Davis Date Jan 8, 1996  
Surveyor's Michigan License No. 16926