

SURVEY & REMONUMENTATION

OCT 26 1995

COMMISSION

LAND CORNER RECORDATION CERTIFICATE
Filing Requirement of Act 74, Mich. P.A. 1970

Approved By Delta County
Land Survey Remonumentation
Peer Group Under Act 345 Of
P.A. Of 1990 On June 6, 1995
Robert Schmalz
Acting Chairman

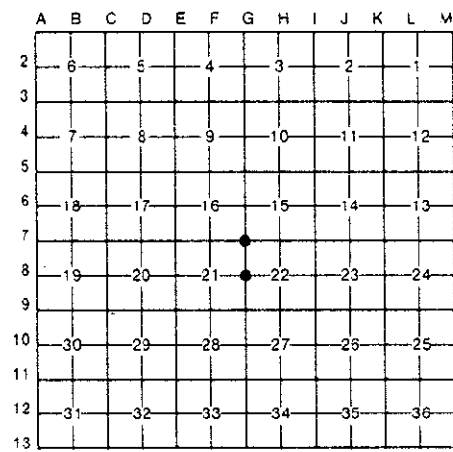
For corners in
DELTA
(County)

Located In: Corner Code ##

- | | | | | | |
|------------------------------------|---|------|---|------|----------------|
| 1. Public Land Survey | T | 38 N | R | 24 W | <u>G-7</u> G-8 |
| | T | | R | | |
| | T | | R | | |
| | T | | R | | |
| 2. Property Controlling in Section | S | | T | R | |
| | S | | T | R | |
| 3. Miscellaneous Property in Sec. | S | | T | R | |
| | S | | T | R | |

Recorded **JUN 13 1995**
9:00 A.M. In Liber 8 Page 88
Register of Deeds Stamp & File Number

4. Lot No. _____, Recorded Plat _____
5. Private Claims G-7 [NW COR S.22] G-8 [W1/4 COR S.22]



I, M.P. DAVIS, in a field survey on MAY, 19 95, do hereby certify that under requirements of P.A. 74, Michigan P.A. of 1970, the corner points mentioned in lines 1 and 2 above were in conformance with regulations and rules therefore as required in the current manual of survey instructions of the United States Department of the Interior, Bureau of Land Management or by a decree of a Court of Law and/or that the corner points mentioned in lines 3, 4 and 5 above were in conformance with the rules of the Michigan Board of Land Surveyors or by a Decree of a Court of Law; established, re-established, monumented, re-monumented, recovered, found as expressed below:

NOTE: Not more than 4 corners, all in the same town and range, may be recorded on this certificate.

- A. Description of original monument and accessories and/or subsequent restoration:
G-7 [NW COR S.22] GEORGE ADAIR, D.S. - 1852 - WOOD POST - (BEECH 10°-N61°E-40 LINKS) (Y. BIRCH 12°-S621/2°W-57 LINKS)
NO RECORD EVIDENCE OF SUBSEQUENT CORNER RECOVERY OR MONUMENTATION

G-8 [W1/4 COR S.22] GEORGE ADAIR, D.S. - 1852 - WOOD POST - (SUGAR 12°-N71°W-24 LINKS) (BEECH 15°-S61°E-23 LINKS)
NO RECORD EVIDENCE OF SUBSEQUENT CORNER RECOVERY OR MONUMENTATION --

- B. Description of corner evidence found and/or method applied in restoring or reestablishing corner:
G-7 [NW COR S.22] NO CORNER EVIDENCE FOUND. RESTORED CORNER POSITION FROM ANCIENT LINES OF OCCUPATION AND ROAD IMPROVEMENTS. ACCEPTED AS BEING THE BEST AVAILABLE EVIDENCE AS TO THE POSITION OF THE ORIGINAL CORNER.

G-8 [W1/4 COR S.22] FOUND IN PLACE, AS INDICATED BY EXISTING E-W OCCUPATION & N-S COUNTY ROAD IMPROVEMENTS A 1 1/4" I.P. APPROXIMATELY 14" BELOW COUNTY ROAD SURFACE. CORNER MONUMENT PLACED BY PERSONS UNKNOWN. AS THIS MONUMENT FITS WELL WITH EXISTING OCCUPATION HAVE ACCEPTED THIS POSITION AS BEING THE BEST AVAILABLE EVIDENCE AS TO THE POSITION OF THE ORIGINAL CORNER.



- C. Description of monument for corner and accessories established to perpetuate locating the position of the corner:
G-7 SET BERNTSEN AINB30 ALUMN MONUMENT WITH THE CAP STAMPED TO ID THE CORNER POSITION.
6" STEEL MAIL BOX POST CUT ON WEST END CMP CUT ON EAST END CMP SURVEY MONUMENT SIGN POST
WEST S26°W S12°E NORTH
7.20' (TO FACE) 51.76' 54.78' 7.27' (TO FACE)

G-8 RAISED TO 6"N/L BELOW ROAD SURFACE W/A 5/8" X 18" REBAR & A 3 1/4" ALUMN CAP STAMPED TO ID THE CORNER POSITION.
BEECH 7° MAPLE 5° SW COR WOOD FRAME SHED SURVEY MONUMENT SIGN POST NOTE: FARM FIELDS IN NW & SW QUADRANTS
N66°E S28°E S51°W WEST
49.58' 59.95' 37.60' 17.70' (TO FACE)

NOTE: BEARINGS TO REFERENCE OBJECTS ARE MAGNETIC - DISTANCES ARE TO A NAIL IN THE CENTER OF THE OBJECT UNLESS NOTED OTHERWISE

Signed by M.P. Davis Date 6/3/95
Surveyor's Michigan License No. 16926