

JUN 2 1999

SECTION

LAND CORNER RECORDATION CERTIFICATE
Filing Requirement of Act 74, Mich. P.A. 1970

Approved By Delta County
Land Survey Remonumentation
Peer Group Under Act 345 Of
P.A. Of 1990 On 3-3, 1999
David B. Halliday
Chairman

For corners in
DELTA
(County)

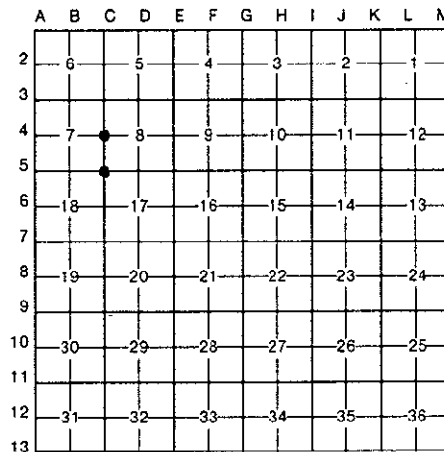
Located In: Corner Code #

Table with 3 columns: Item description, Located In, Corner Code #. Includes Public Land Survey, Property Controlling, and Miscellaneous categories.

Mar 4 1999
9:00 AM
9 141
Walter C. Thorne

Register of Deeds Stamp & File Number

- 4. Lot No.
5. Private Claims
C-4 [W1/4 COR SEC 8] C-5 [NW COR SEC 17]



I, M.P. DAVIS, in a field survey on FEBRUARY, 1999, do hereby certify that under requirements of P.A. 74, Michigan P.A. of 1970, the corner points mentioned in lines 1 and 2 above were in conformance with regulations and rules therefore as required in the current manual of survey instructions of the United States Department of the Interior, Bureau of Land Management or by a decree of a Court of Law and/or that the corner points mentioned in lines 3, 4 and 5 above were in conformance with the rules of the Michigan Board of Land Surveyors or by a Decree of a Court of Law; established, re-established, monumented, re-monumented, recovered, found as expressed below:

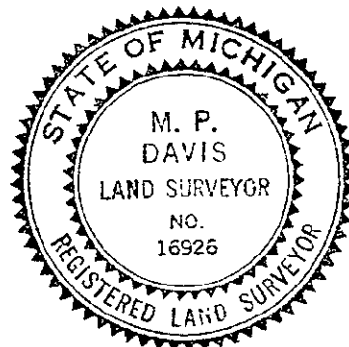
NOTE: Not more than 4 corners, all in the same town and range, may be recorded on this certificate.

A. Description of original monument and accessories and/or subsequent restoration:

- C-4 [W1/4 COR SEC. 8] A.MERRYWEATHER, DS - 1848 - WOOD POST - (SUGAR 12" S40°E 04 LINKS)(BEECH 07" N45°W 27 LINKS) M.S.McNABB-1939-IRON IN PLACE-NO WIT'S NOTED M.DAVIS-1972-L.1 PG.24 LCR'S-FOUND 1' IRON BAR IN PLACE (C/L FENCE POST N45°W 2.30')(FENCE LINE SOUTH WEST 2.0')(FENCE LINE E-W NORTH 1.20')
C-5 [NW COR SEC 17] A.MERRYWEATHER,D.S. - 1848 - (CEDAR 12" N35°W 21 LINKS) (CEDAR 10" S32°E-25 LINKS) M.S.McNABB-1924-IRON IN PLACE-SUPV PLAT NO. 1 VILLAGE OF GARDEN & GARDEN TWP. LIBER "B" OF PLATS PAGE 42 M.S.McNABB-1939-IRON STAKE IN PLACE-NO WIT'S NOTED M.DAVIS RLS-1973-L.1 PG.405 LCR'S-FOUND IRON BOLT IN PLACE (TWIN BOX ELDER 18" N37°E 51.0')(BOX ELDER 18" N69°E 93.1')

B. Description of corner evidence found and/or method applied in restoring or reestablishing corner:

- C-4 [W1/4 COR SEC. 8] FOUND IN PLACE A 1" IRON BAR AT JCT OF FENCE LINES E-W & S. MEASUREMENTS TO ADJOINING CORNERS INDICATES THE MONUMENT TO BE THE SAME AS MENTIONED IN McNABB'S 1939 FIELD NOTES. ID THE CORNER MONUMENT AS BEING THE SAME AS FOUND BY MYSELF IN 1972 FROM BT'S RECORDED AT L.1 OF LCR'S PG.24. ACCEPTED EXISTING MONUMENT AS BEING THE BEST AVAILABLE EVIDENCE AS TO THE POSITION OF THE ORIGINAL CORNER.
C-5 [NW COR SEC 17] FOUND IN PLACE A 3/4" IRON PIPE AS SET OVER AN EXISTING IRON BOLT BY MYSELF IN 1973. CORNER MONUMENT ID FROM THE PLAT OF THE SUPERVISOR'S PLAT OF THE VILLAGE OF GARDEN & GARDEN TWP. AS REC'D IN LIBER "B" OF PLATS ON PG.42 AND FROM BT'S REC'D AT L.1 OF LCR'S PG.405. ACCEPTED EXISTING MONUMENT AS BEING THE BEST AVAILABLE EVIDENCE AS TO THE POSITION OF THE ORIGINAL CORNER.



C. Description of monument for corner and accessories established to perpetuate locating the position of the corner:

- C-4 SET, OVER EXISTING MONUMENT, A BERNTSEN A1NB30 ALUM MONUMENT W/A 3 1/4" CAP STAMPED TO ID THE CORNER POSITION. 3/4" FENCE POST ANCHOR PIN CORNER FENCE POST APPLE 07" SURVEY MONUMENT SIGN POST NOTE: FARM FIELDS IN ALL FOUR QUADRANTS
N55°W WEST S44°W SOUTH
6.66' 1.32' (TO FACE) 40.08' 0.94' (TO FACE)
C-5 SET, OVER EXISTING MONUMENT, A BERNTSEN A1NB30 ALUMN MON. W/A 3 1/4" CAP STAMPED TO ID THE CORNER POSITION. CEDAR 15" BOX ELDER TWIN BOX ELDER 24" NW COR METAL BLDG. NOTE: COR MONUMENT IS LOCATED IN A RESIDENTIAL YARD. BT'S WERE NOT MARKED OR SCRIBED & NO WIT'S POST WAS PLACED AT THE CORNER SITE.
S82°W N15°E N74°E S25°E
160.06' 80.15' 98.05' 145.65'

NOTE: BEARINGS TO REFERENCE OBJECTS ARE MAGNETIC-DISTANCES ARE TO A NAIL W/A DELTA COUNTY REFERENCE TAG, UNLESS OTHERWISE NOTED.

Signed by M.P. Davis Date 2/15/99

Surveyor's Michigan License No. 16926