

JUN 5 2000

SECTION

LAND CORNER RECORDATION CERTIFICATE
Filing Requirement of Act 74, Mich. P.A. 1970

Approved By Delta County
Land Survey Remonumentation
Peer Group Under Act 345 Of
P.A. Of 1990 On 3-3, 1999
David R. Babbitt
Chairman

For corners in

DELTA
(County)

Located In:

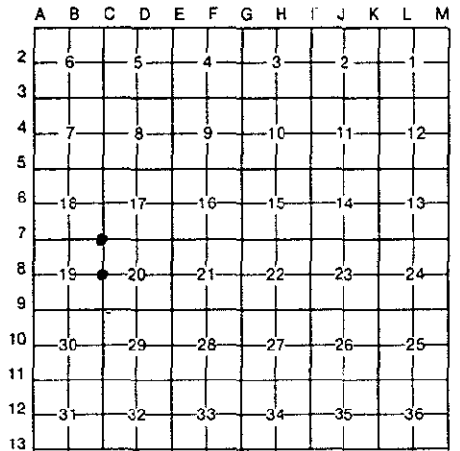
Corner Code #

- 1. Public Land Survey T 39 N R 18 W C-7
T 39 N R 18 W C-8
2. Property Controlling in Section S T R
3. Miscellaneous Property in Sec. S T R

Mar 4 1999
9:00 AM
9 PG 142
William C. Thomas

Register of Deeds Stamp & File Number

- 4. Lot No. , Recorded Plat
5. Private Claims C-7 [NW COR SEC 20] C-8 [W1/4 COR SEC 20]



I, M.P. DAVIS, in a field survey on FEBRUARY, 19 99, do hereby certify that under requirements of P.A. 74, Michigan P.A. of 1970, the corner points mentioned in lines 1 and 2 above were in conformance with regulations and rules therefore as required in the current manual of survey instructions of the United States Department of the Interior, Bureau of Land Management or by a decree of a Court of Law and/or that the corner points mentioned in lines 3, 4 and 5 above were in conformance with the rules of the Michigan Board of Land Surveyors or by a Decree of a Court of Law; established, re-established, monumented, re-monumented, recovered, found as expressed below:

NOTE: Not more than 4 corners, all in the same town and range, may be recorded on this certificate.

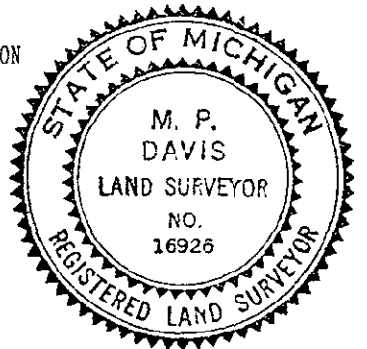
A. Description of original monument and accessories and/or subsequent restoration:

- C-7 [NW COR SEC. 20] A.MERRYWEATHER, DS - 1848 - WOOD POST - (SUGAR 10° S75°E 07 LINKS)(SUGAR 10° N65°W 35 LINKS) M.S.McNABB-1900-IRON BOLT IN PLACE BY JOHN CRAIG FROM ORIGINALS IN 1884-COR FENCE POST N36°W 39.0' POPLAR 8' NORTH 72' M.DAVIS-1981-FD IRON BOLT IN PLACE RAISED TO GRADE W/A I.P IN MON BOX (ANCHOR POLE N55°E 45.9')(PP S47°E 49.8')(RD SIGN POST S65°W 46.8') NEIL HILL RLS-1986-L.6 PG.105 LCR'S-FD I.P. IN MON BOX (PROP IRON NORTH 33.0')(GUY POLE N55°E 45.8')(PP S50°E 49.8')(POPLAR S30°W 65.24')

- C-8 [W1/4 COR SEC 20] A.MERRYWEATHER,D.S. - 1848 - (SUGAR 10° N60°E 12 LINKS) (SUGAR 12° S15°W-10 LINKS) W.BOWMAN RLS-1989-L.6 PG.120 LCR'S-FOUND 1/2" I.P. IN PLACE (PP S48°E 43.95')(CEDAR 16° N46°E 41.15')

B. Description of corner evidence found and/or method applied in restoring or reestablishing corner:

- C-7 [NW COR SEC. 20] FOUND IN PLACE AND INSIDE A MONUMENT BOX A 3/4" IRON PIPE. ID EXISTING MONUMENT FROM BT'S REC'D AT L.6 OF LCR'S PG.105. MEASUREMENTS TO ADJOINING COR'S INDICATE THIS THIS POSITION TO BE THE SAME AS ID BY M.S.McNABB IN 1900 & SAID TO HAVE BEEN RESTORED FROM THE ORIGINAL BT'S. ACCEPTED EXISTING MONUMENT AS BEING A CAREFUL & FAITHFUL PERPETUATION OF THE POSITION OF THE ORIGINAL CORNER.
C-8 [W1/4 COR SEC 20] FOUND IN PLACE A 1/2" IRON PIPE. ID CORNER MONUMENT FROM BT'S AS RECORDED AT L.6 OF LCR'S PG.120. ACCEPTED EXISTING MONUMENT AS BEING THE BEST AVAILABLE EVIDENCE AS TO THE LOCATION OF THE POSITION OF THE ORIGINAL CORNER.



C. Description of monument for corner and accessories established to perpetuate locating the position of the corner:

- C-7 REPLACED EXISTING MONUMENT W/A 5/8" X 18" REBAR W/A 3 1/4" ALUM CAP STAMPED TO ID THE CORNER POSITION. SURVEY MONUMENT SIGN POST NORTH NOTE: ALL ACCESSORIES SHOWN AT L.6 OF LCR'S PG.105 ARE STILL IN PLACE & VIABLE. NO ADDITIONAL BT'S NEEDED. 1.27' (TO FACE)
C-8 SET, OVER EXISTING MONUMENT, A 5/8" X 18" REBAR W/A 3 1/4" CAP STAMPED TO ID THE CORNER POSITION. W.PINE 08" POWER POLE (OLD BT) NE COR GARAGE BLDG. SURVEY MONUMENT SIGN POST N54°W S48°E S71°E EAST 84.62' 43.95 61.08' 23.93' (TO FACE)

NOTE: BEARINGS TO REFERENCE OBJECTS ARE MAGNETIC-DISTANCES ARE TO A NAIL W/A DELTA COUNTY REFERENCE TAG, UNLESS OTHERWISE NOTED.

Signed by M.P. Davis Date 2/15/99

Surveyor's Michigan License No. 16926