

JAN 23 2000

SECTION

LAND CORNER RECORDATION CERTIFICATE
Filing Requirement of Act 74, Mich. P.A. 1970

Approved By Delta County
Land Survey Remonumentation
Peer Group Under Act 345 Of
P.A. Of 1990 On 3-3, 1999
David B. Babbitt
Chairman

For corners in

DELTA
(County)

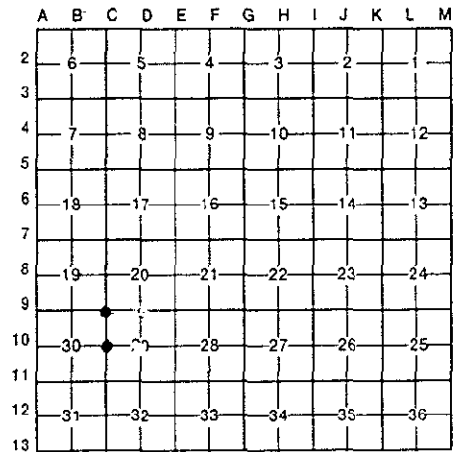
Located In:

Corner Code #

- 1. Public Land Survey T 39 N R 18 W C 9
T 39 N R 18 W C 10
2. Property Controlling in Section S T R
3. Miscellaneous Property in Sec. S T R

Mar 4 1999
9:00 AM
143
Register of Deeds Stamp & File Number

- 4. Lot No. Recorded Plat
5. Private Claims C-9 [NW COR SEC 29] C-10 [W1/4 COR SEC 29]



I, M.P. DAVIS, in a field survey on FEBRUARY, 1999, do hereby certify that under requirements of P.A. 74, Michigan P.A. of 1970, the corner points mentioned in lines 1 and 2 above were in conformance with regulations and rules therefore as required in the current manual of survey instructions of the United States Department of the Interior, Bureau of Land Management or by a decree of a Court of Law and/or that the corner points mentioned in lines 3, 4 and 5 above were in conformance with the rules of the Michigan Board of Land Surveyors or by a Decree of a Court of Law; established, re-established, monumented, re-monumented, recovered, found as expressed below:

NOTE: Not more than 4 corners, all in the same town and range, may be recorded on this certificate.

A. Description of original monument and accessories and/or subsequent restoration:

C-9 [NW COR SEC. 29] A.MERRYWEATHER, DS - 1848 - WOOD POST - (NORWAY PINE 18" S28°E 22 LINKS)(WHITE PINE 10" N44°W 40 LINKS) W.BOWMAN RLS-1989-L.6 PG.120 LCR'S-FD 1" IRON BAR (COR FENCE POST S84°E 30.0')(FENCE POST N33°E 51.2')(FENCE POST S62°W 41.1')

C-10 [W1/4 COR SEC 29] A.MERRYWEATHER, D.S. - 1848 - (WHITE PINE 20" S40°W 20 LINKS) (CEDAR 20" N44°E-30 LINKS) NO RECORD EVIDENCE OF CORNER RECOVERY AND/OR SUBSEQUENT MONUMENTATION

B. Description of corner evidence found and/or method applied in restoring or reestablishing corner:

C-9 [NW COR SEC. 29] FOUND IN PLACE ON APPROX C/L OF N-S COUNTY ROAD AND IN LINE WITH ANCIENT FARM FENCES E & W A 1" IRON BAR BY PERSONS UNKNOWN. ID CORNER MONUMENT FROM BT'S RECORDED AT L.6. OF LCR'S PG.120. ACCEPTED EXISTING MONUMENT AS BEING THE BEST AVAILABLE EVIDENCE AS TO THE LOCATION OF THE POSITION OF THE ORIGINAL CORNER.

C-10 [W1/4 COR SEC 29] NO CORNER EVIDENCE FOUND. REESTABLISHED CORNER POSITION AT MIDPOINT AND ON LINE WITH SECTION CORNERS 1/2 MILE NORTH AND SOUTH.



C. Description of monument for corner and accessories established to perpetuate locating the position of the corner:

C-9 SET, OVER EXISTING MONUMENT, A BERNTSEN AINB30 ALUM MONUMENT W/A 3 1/4" CAP STAMPED TO ID THE CORNER POSITION. SURVEY MONUMENT SIGN POST EAST NOTE: FARM FIELDS IN ALL FOUR QUADRANTS. ACCESSORIES RED'D AT L.6 OF LCR'S PG.120 ARE IN PLACE & VIABLE. NO ADDITIONAL BT'S NEED. 24.70' (TO FACE)

C-10 SET A 5/8" X 18" REBAR W/A 3 1/4" ALUM CAP STAMPED TO ID THE CORNER POSITION. BOLT IN TOP OF 3'X3' STONE FENCE CORNER DRILL HOLE & REBAR IN LARGE STONE POWER POLE NOTE: FARM FIELDS IN ALL FOUR QUADRANTS. NO OTHER WIT'S AVAILABLE. S51°W 48.05' S15°E 41.02' S59°E 64.60'

NOTE: BEARINGS TO REFERENCE OBJECTS ARE MAGNETIC-DISTANCES ARE TO A NAIL W/A DELTA COUNTY REFERENCE TAG, UNLESS OTHERWISE NOTED.

Signed by M.P. DAVIS Date 2/15/99

Surveyor's Michigan License No. 16926