

JAN 4 2000

Approved by Delta County
Land Survey Remonumentation
Peer Group Under Act 345 Of
P.A. Of 1990 On Dec 28, 1999

Robert Schmelzer
Acting Chairman

SECTION

LAND CORNER RECORDATION CERTIFICATE
Filing Requirement of Act 74, Mich. P.A. 1970

For corners in

DELTA (County)	Located In:	Corner Code #
1. Public Land Survey	T 39 NR 18 W	B-09
	T 39 NR 18 W	C-12 ✓
	T R	
	T R	
2. Property Controlling in Section	S T R	
	S T R	
3. Miscellaneous Property in Sec.	S T R	
	S T R	

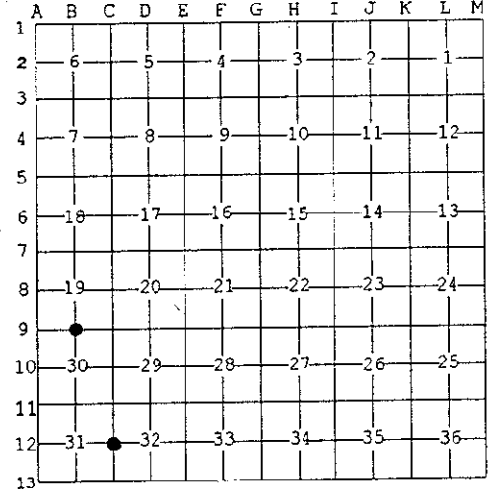
61-04-00
2:00 O'CLOCK PM
9 PAGE 168
William C. Thomas
TOWN SEC. OF DEEDS

Register of Deeds Stamp & File Number

B-09 [N1/4 COR SEC 30] C-12 [W/4 COR SEC 32]

4. Lot No. _____, Recorded Plat _____
5. Private Claims _____

I, M.P. DAVIS, in a field survey on DECEMBER, 1999 do hereby state that under requirements of P.A. 74, Michigan P.A. of 1970, the corner points mentioned in lines 1 and 2 above were in conformance with regulations and rules therefore as required in the current manual of survey instructions of the United States Department of the Interior, Bureau of Land Management or by a decree of a Court of Law and /or that the corner points mentioned in lines 3, 4 and 5 above were in conformance with the rules of the Michigan Board of Land Surveyors or by a Decree of a Court of Law, established, re-established, monumented, recovered, found as expressed below:



NOTE: Not more than 2 corners, all in the same town and range, may be recorded on this certificate.

- A. Description of original monument and accessories and/or subsequent restoration:
- B-09 [N1/4 COR SEC 30] A.MERRYWEATHER,D.S.-1848-WOOD POST (HEMLOCK 18" N30°W 18 LINKS)(SUGAR 14" S06°E 28 LINKS) NO RECORD EVIDENCE OF CORNER RECOVERY AN/OR SUBSEQUENT
 - C-12 [W/4 COR SEC 32] A.MERRYWEATHER,D.S.-1848-1/4 POST IN POND (BALM A GILEAD 10" S70°W 15 LINKS)(POPLAR 10" N55°E 29 LINKS) NO RECORD EVIDENCE OF CORNER RECOVERY AND/OR SUBSEQUENT MONUMENTATION.

- B. Description of corner evidence found and/or method applied in restoring or reestablishing corner:
- B-09 [N1/4 COR SEC 30] NO CORNER EVIDENCE FOUND. REESTABLISHED CORNER POSITION ON LINE WITH SEC. CORNERS 1/2 MILE TO THE EAST AND WEST AND IN LINE WITH A WELL DEFINED N-S FARM FENCE, WHICH FROM ALL APPEARANCES HAS BEEN WELL RECOGNIZED AS THE BOUNDARY LINE BETWEEN ADJOINING PROPERTY OWNERS. THE N-S FENCE IS 12.74' WEST OF THE MIDPOINT BETWEEN SECTION CORNERS. ACCEPTED THIS POSITION AS BEING THE BEST AVAILABLE EVIDENCE AS TO THE POSITION OF THE ORIGINAL CORNER.
 - C-12 [W/4 COR SEC 32] NO CORNER EVIDENCE FOUND. REESTABLISHED CORNER POSITION ON LINE WITH AND AT THE MIDPOINT BETWEEN SECTION CORNERS 1/2 MILE TO THE NORTH AND SOUTH. THE MONUMENTED CORNER POSITION FALLS ON THE EASTERLY EDGE OF A DRY POND BED, WHICH FROM ALL APPEARANCES WOULD BE THE SAME AS THAT CALLED FOR IN THE ORIGINAL NOTES.



C. Description of monument for corner and accessories established to perpetuate locating the position of the corner:

- B-09 SET A 5/8" X 18" REBAR W/A 3-1/4" ALUM CAP STAMPED TO ID THE CORNER POSITION.

MAPLE 12"	MAPLE 09"	MAPLE 14"	HEMLOCK 11"
S32°W	S67°W	N05°E	N49°W
22.65'	15.40'	30.82'	22.70'
- C-12 SET A BERNTSEN A1NB30 ALUM MONUMENT WITH THE CAP STAMPED TO ID THE CORNER POSITION.

ASPEN 08"	SPRUCE 09"	SPRUCE 08"	ASPEN 10"
N63°W	N38°E	S80°E	S15°W
19.00'	7.73'	23.00'	17.40'

NOTE: BEARINGS TO REFERENCE OBJECTS ARE MAGNETIC-DISTANCES ARE TO A NAIL W/A DELTA COUNTY REFERENCE TAG, UNLESS OTHERWISE NOTED.

Signed by *M.P. Davis* Date 12/20/99
Surveyor's Michigan License No. 16926