

JAN 2 1999

SECTION

LAND CORNER RECORDATION CERTIFICATE
Filing Requirement of Act 74, Mich. P.A. 1970

Approved By Delta County
Land Survey Remonumentation
Peer Group Under Act 345 Of
P.A. Of 1990 On 3-3, 1999
David B. Bobbitt
Chairman

For corners in
DELTA
(County)

Located In: Corner Code #

- 1. Public Land Survey T 39 N R 18 W E-5
T 39 N R 18 W E-6
2. Property Controlling in Section S T R
3. Miscellaneous Property in Sec. S T R

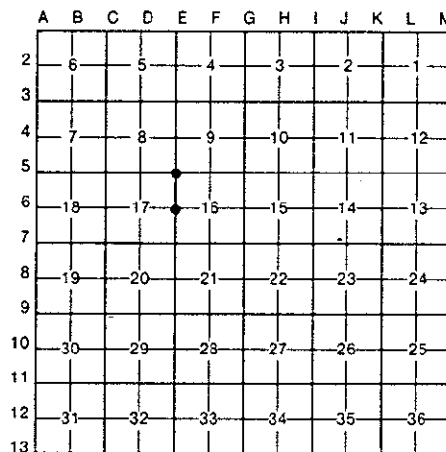
Registered Mar 4 1999
9:00 AM
Page 9 of 148
M. P. Davis

Register of Deeds Stamp & File Number

- 4. Lot No. Recorded Plat
5. Private Claims

E-5 [NW COR SEC 16] E-6 [W1/4 COR SEC 16]

I, M.P. DAVIS, in a field survey on FEBRUARY, 1999, do hereby certify that under requirements of P.A. 74, Michigan P.A. of 1970, the corner points mentioned in lines 1 and 2 above were in conformance with regulations and rules therefore as required in the current manual of survey instructions of the United States Department of the Interior, Bureau of Land Management or by a decree of a Court of Law and/or that the corner points mentioned in lines 3, 4 and 5 above were in conformance with the rules of the Michigan Board of Land Surveyors or by a Decree of a Court of Law; established, re-established, monumented, re-monumented, recovered, found as expressed below:



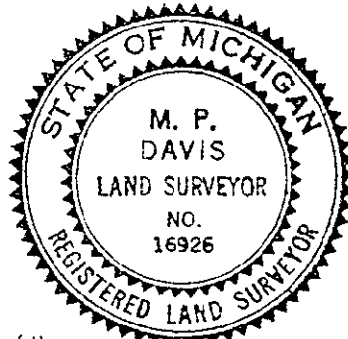
NOTE: Not more than 4 corners, all in the same town and range, may be recorded on this certificate.

A. Description of original monument and accessories and/or subsequent restoration:

- E-5 [NW COR SEC. 16] A.MERRYWEATHER, DS-1848-SET WOOD POST (BIRCH 28" N75°E 37 LINKS)(CEDAR 24" S40°W 18 LINKS) M.S.McNABB-1923-STEEL AUTO AXEL IN PLACE FOR CORNER-CORNER FENCE POSTS (SOUTH 33')(NE 45')(NW 44.5') T.OBRIEN, RLS-1980-L.2 PG.406 LCR'S-FD 1/2" IRON BAR-FENCE COR N41°E 42.65' PP S12°W 40.45' NEIL HILL, RLS-1986-L.6 PG.115 LCR'S-FD 3/4" IRON BAR-FENCE COR N45°E 55.73' PP S20°W 40.65' WEST ENC CULVERT N20°W 32.30'
E-6 [W1/4 COR SEC 16] A.MERRYWEATHER, DS-1848-SET WOOD POST-(W.PINE 20" N07°E 19 LINKS)(HEMLOCK 08" S63°E 19 LINKS) M.S.McNABB-1923-IRON ROD OR BOLT IN PLACE "1/2 DISTANCE BETWEEN CORNERS" NEIL HILL, RLS-1986-L.6 PG.111 LCR'S-FD 1" STEEL PIN IN PLACE-FENCE BRACE POST S20°E 35.16' APPLE 6" S50°W 40.79' FENCE POST S60°W 55.5' APPLE 9" S65°E 80.50'

B. Description of corner evidence found and/or method applied in restoring or reestablishing corner:

- E-5 [NW COR SEC. 16] FOUND IN PLACE A 3/4" IRON BAR, BY PERSONS UNKNOWN. ID CORNER MONUMENT FROM BT'S REC'D AT L.6 OF LCR'S PG.115. AS NO OTHER EVIDENCE EXIST AS TO THE LOCATION OF THIS CORNER AND IT IS APPARENT THAT LONG STANDING FARM OCCUPATION LINES HAVE DEVELOPED OVER THE YEARS FROM THIS POSITION, I HAVE ACCEPTED THE EXISTING MONUMENT AS BEING THE BEST AVAILABLE EVIDENCE AS TO THE POSITION OF THE ORIGINAL CORNER.
E-6 [W1/4 COR SEC 16] FOUND IN PLACE A 1" IRON PIN W/A 2' FLAT HEAD. ID COR MONUMENT FROM BT'S REC'D AT L.6 OF LCR'S PG.111. MEASUREMENTS TO ADJOINING CORNERS N & W INDICATES THIS MONUMENT TO BE THE SAME AS FOUND IN 1923 BY M.S.McNABB. ACCEPTED EXISTING MONUMENT AS BEING A CAREFUL & FAITHFUL REESTABLISHMENT OF THE POSITION OF THE ORIGINAL CORNER.



C. Description of monument for corner and accessories established to perpetuate locating the position of the corner:

- E-5 SET, OVER EXISTING MONUMENT, A 5/8" X 18" REBAR W/A 3 1/4" ALUM CAP STAMPED TO ID THE CORNER POSITION. 5/8" X 18" REBAR W/A 2" ALUM WIT CAP SURVEY MONUMENT SIGN POST NOTE: FARM FIELDS IN ALL FOUR QUADRANTS NO OTHER WIT'S AVAILABLE N45°E S45°E SOUTH 22.85' 36.49' 35.51' (TO FACE)
E-6 SET, OVER EXISTING MONUMENT, A BERNTSEN AINBJO ALUMN MON. W/A 3 1/4" CAP STAMPED TO ID THE CORNER POSITION. SURVEY MONUMENT SIGN POST NOTE: BT'S SHOWN AT L.6 OF LCR'S PG.111 ARE ALL IN PLACE AND VIABLE NORTH 19.36' (TO FACE)

NOTE: BEARINGS TO REFERENCE OBJECTS ARE MAGNETIC-DISTANCES ARE TO A NAIL W/A DELTA COUNTY REFERENCE TAG, UNLESS OTHERWISE NOTED.

Signed by M.P. Davis Date 2/15/99
Surveyor's Michigan License No. 16926