

JAN 20 2000

SECTION

LAND CORNER RECORDATION CERTIFICATE
Filing Requirement of Act 74, Mich. P.A. 1970

Approved By Delta County
Land Survey Remonumentation
Peer Group Under Act 345 Of
P.A. Of 1990 On 3-3, 1999
David B. Bobbitt
Chairman

For corners in
DELTA
(County)

Located In:

Corner Code #

Table with 3 columns: Item description, Located In (T, S, R), and Corner Code #. Includes items like Public Land Survey, Property Controlling in Section, and Miscellaneous Property in Sec.

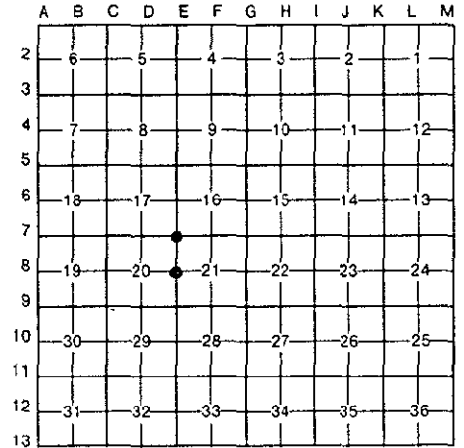
Handwritten stamp: Mar 4 1999, 1:00 AM, 9 PM, 1999, with signature of J. C. Thomas.

Register of Deeds Stamp & File Number

- 4. Lot No. , Recorded Plat
5. Private Claims

E-7 [NW COR SEC 21] E-8 [W1/4 COR SEC 21]

I, M.P. DAVIS, in a field survey on FEBRUARY, 19 99, do hereby certify that under requirements of P.A. 74, Michigan P.A. of 1970, the corner points mentioned in lines 1 and 2 above were in conformance with regulations and rules therefore as required in the current manual of survey instructions of the United States Department of the Interior, Bureau of Land Management or by a decree of a Court of Law and/or that the corner points mentioned in lines 3, 4 and 5 above were in conformance with the rules of the Michigan Board of Land Surveyors or by a Decree of a Court of Law; established, re-established, monumented, re-monumented, recovered, found as expressed below:



NOTE: Not more than 4 corners, all in the same town and range, may be recorded on this certificate.

A. Description of original monument and accessories and/or subsequent restoration:

E-7 [NW COR SEC. 21] A.MERRYWETHER, DS-1848-SET WOOD POST (BALSAM 12° N40°E 11 LINKS)(HEMLOCK 12° S50°E 24 LINKS) M.S.McNABB-1900-IRON BOLT IN PLACE BY J.CRAIG 1884, FROM ORIGINALS- NO WIT'S NOTED T.OBRIEN, RLS-1980-L.2 PG.406 LCR'S-FD 1 1/4" IRON BAR AT FENCE NORTH PP S44°E 42.50' FENCE COR NORTH 32.5' NEIL HILL, RLS-1986-L.6 PG.107 LCR'S-FD 1/2" I.P. COR FENCE POST NORTH 32.86' COR FENCE POST SOUTH 32.96' APPLE 24° S60°E 114.65'

E-8 [W1/4 COR SEC 21] A.MERRYWEATHER, DS-1848-SET WOOD POST-(BALSAM 04° S50°E 06 LINKS)(CEDAR 08° N10°W 04 LINKS) NO RECORD EVIDENCE OF CORNER RECOVERY AND/OR SUBSEQUENT MONUMENTATION

B. Description of corner evidence found and/or method applied in restoring or reestablishing corner:

E-7 [NW COR SEC. 21] FOUND IN PLACE 1 1/4" IRON BAR. ID CORNER MONUMENT FROM BT'S REC'D AT L.2 OF LCR'S PG.406. THIS MONUMENT IS IN CONFLICT WITH THE 1/2" IRON PIPE (0.4' ± SE OF THE 1 1/4" IRON BAR) WITNESSED AT L.6 OF LCR'S PG.107 BY NEIL HILL, RLS. REJECTED THE 1/2" IRON PIPE AND ACCEPTED THE 1 1/4" IRON BAR AS BEING THE BEST AVAILABLE EVIDENCE AS TO THE LOCATION OF THE POSITION OF THE ORIGINAL CORNER.

E-8 [W1/4 COR SEC 21] NO CORNER EVIDENCE FOUND. EXTENDED LINE EAST FROM W1/4 COR SEC 20 (BOWMAN RLS L.6 PG.120) THRU THE C1/4 COR SEC 20 (BOWMAN RLS, L.6 PG.121) AND ESTABLISHED THE 1/4 COR ON THIS LINE AT THE INTERSECTION WITH A LONG STANDING N-S FARM FENCE. ACCEPTED THIS LOCATION AS BEING THE BEST AVAILABLE EVIDENCE AS TO THE POSITION OF THE ORIGINAL CORNER.



C. Description of monument for corner and accessories established to perpetuate locating the position of the corner:

E-7 SET, OVER EXISTING MONUMENT, A BERNTSEN A1NB30 ALUM MONUMENT W/A 3 1/4" CAP STAMPED TO ID THE CORNER POSITION. 5/8" X 18" REBAR W/A 2" ALUM WIT CAP POWER POLE CORNER FENCE POST SURVEY MONUMENT SIGN POST N45°W S40°E SOUTH NORTH 44.13' 42.85' 33.33' 21.55' (TO FACE)

E-8 SET A BERNTSEN A1NB30 ALUMN MON. W/A 3 1/4" CAP STAMPED TO ID THE CORNER POSITION. CORNER FENCE POST NW COR SEC 21 C1/4 COR SEC 20 SURVEY MONUMENT SIGN POST NOTE: FARM FIELDS IN ALL 4 QUADRANTS SOUTH NORTH WEST NORTH NO OTHER WIT'S AVAILABLE 12.83' 2655.40' 2672.76' 1.25' (TO FACE)

NOTE: BEARINGS TO REFERENCE OBJECTS ARE MAGNETIC-DISTANCES ARE TO A NAIL W/A DELTA COUNTY REFERENCE TAG, UNLESS OTHERWISE NOTED.

Signed by M.P. Davis Date 2/22/92
Surveyor's Michigan License No. 16926