

JAN 2 2000

Approved by Delta County  
Land Survey Remonumentation  
Peer Group Under Act 345 Of  
P.A. Of 1990 On 3-3, 1999  
David B. Babbitt  
Chairman

SECTION

LAND CORNER RECORDATION CERTIFICATE  
Filing Requirement of Act 74, Mich. P.A. 1970

For corners in  
DELTA  
(County)

Located In: Corner Code ##

- 1. Public Land Survey
  - T 39 N R 18 W A - 7 SAME
  - T 39 N R 19 W M - 7 CORNER
  - T 39 N R 19 W G - 1 SAME ✓
  - T 40 N R 18 W G - 13 CORNER
- 2. Property Controlling in Section
  - S \_\_\_\_\_ T \_\_\_\_\_ R \_\_\_\_\_
  - S \_\_\_\_\_ T \_\_\_\_\_ R \_\_\_\_\_
- 3. Miscellaneous Property in Sec.
  - S \_\_\_\_\_ T \_\_\_\_\_ R \_\_\_\_\_
  - S \_\_\_\_\_ T \_\_\_\_\_ R \_\_\_\_\_

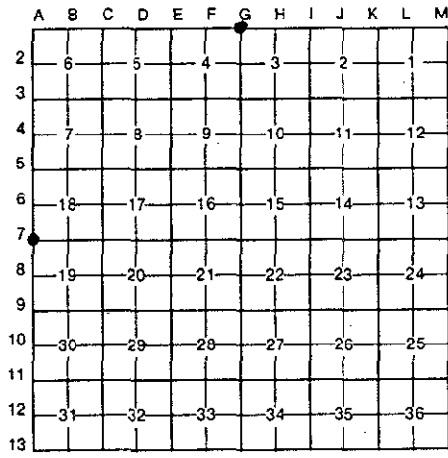
Recorded Mar 4 1999  
at 9:00 o'clock AM  
Lib 9 Pg 135  
William C. Thum  
Delta County, MI Reg. of Deeds

Register of Deeds Stamp & File Number

- 4. Lot No. \_\_\_\_\_, Recorded Plat \_\_\_\_\_
- 5. Private Claims \_\_\_\_\_

A-7 [NW COR SEC 19] G-1 [NW COR SEC 3]

I, M.P. DAVIS, in a field survey on FEBRUARY, 19 99, do hereby certify that under requirements of P.A. 74, Michigan P.A. of 1970, the corner points mentioned in lines 1 and 2 above were in conformance with regulations and rules therefore as required in the current manual of survey instructions of the United States Department of the Interior, Bureau of Land Management or by a decree of a Court of Law and/or that the corner points mentioned in lines 3, 4 and 5 above were in conformance with the rules of the Michigan Board of Land Surveyors or by a Decree of a Court of Law; established, re-established, monumented, re-monumented, recovered, found as expressed below:



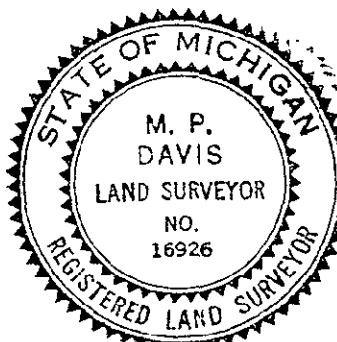
NOTE: Not more than 4 corners, all in the same town and range, may be recorded on this certificate.

A. Description of original monument and accessories and/or subsequent restoration:

- A-7 [NW COR SEC. 19] JOHN BURT, DS - 1845 - WOOD POST - (SUGAR 07" N27°W 26 LINKS)(LYNN 16" S10°W 24 LINKS) A.MERRYWEATHER, DS - 1848 - WOOD POST IN PLACE - (BEECH 18" N20°E 48 LINKS) (SUGAR 10" S35°E 10 LINKS) M.DAVIS RLS-1981-L.3 PG.75 LCR'S- RECOVERED 1/2" IRON PIN WITH O'BRIEN RLS CAP- RAISED TO GRADE W/A MON BOX C/L MAPLE 18" SOUTH 48.9' C/L MAPLE 24" N9°E 80.0' C/L COR FENCE POST NORTH 31.5' NEIL HILL RLS-1986-L.6 PG.103 LCR'S-RECOVERED 1/2" IRON PIN IN MON BOX (ANCHOR FENCE POST NORTH 31.5')(W.BIRCH 8" S40°E 78.3) MAPLE 18" SOUTH 48.92')(MAPLE 24" N70°E 79.93'
- G-1 [NW COR SEC 3] JOHN EURT, D.S. - 1845 - (TAMARACK 03" N49°E 19 LINKS) (CEDAR 07 S35°W-25 LINKS) A.MERRYWEATHER, D.S.-1848-HEMLOCK 10" S40°E 30 LINKS SPRUCE 4" S30°W 17 LINKS FRANK BRAY, RLS - 1970 - PLACED CORNER ON LINE WITH & PROPORTIONATE DISTANCE BETWEEN SECTION CORNER 1 MILE WEST & 1/4 CORNER 2 1/2 MILES EAST. SET 1" I.P. W/A 4" ALUM CAP STAMPED TO ID THE CORNER POSITION (CEDAR 10" N72°W 9.3')(HEMLOCK 8" N72°E 21.2')

B. Description of corner evidence found and/or method applied in restoring or reestablishing corner:

- A-7 [NW COR SEC. 19] FOUND IN PLACE MONUMENT AS DESCRIBED ABOVE BY NEIL HILL, ALL 1986 BT'S ARE STILL VIABLE. ACCEPTED EXISTING MONUMENT AS THE BEST AVAILABLE EVIDENCE AS TO THE LOCATION OF THE POSITION OF THE ORIGINAL CORNER.
- G-1 [NW COR SEC 3] FOUND IN PLACE A 1" IRON PIPE W/A 4" ALUM CAP STAMPED TO ID THE CORNER POSITION. ID CORNER MONUMENT BY BOTH BT'S (STILL GREEN) AS RECORDED AT L.4 OF LCR'S PG.212. ACCEPTED EXISTING MONUMENT AS A CAREFUL & FAITHFUL REESTABLISHMENT OF THE POSITION OF THE ORIGINAL CORNER.



C. Description of monument for corner and accessories established to perpetuate locating the position of the corner:

- A-7 REPLACED EXISTING MON W/A 5/8" X 18" REBAR W/A 3 1/4" ALUM CAP STAMPED TO ID THE CORNER POSITION.
 

WHITE BIRCH 05"	ASH 06"	WHITE BIRCH 10" (OLD BT)	MAPLE 17" (OLD BT)	SURVEY MONUMENT SIGN POST
N21°W	N32°E	S40°E	SOUTH	NORTH
43.10'	34.97'	78.32'	49.92	22.65' (TO FACE)
- G-1 DID NOT DISTURB EXISTING MONUMENT & NOTED NEW WITNESSES.
 

CEDAR 13" (OLD BT)	HEMLOCK 13" (OLD BT)	WHITE BIRCH 16"	MAPLE 07"	SURVEY MONUMENT SIGN POST
N72°W	S88°E	N25°E	S08°W	WEST
10.41'	21.47'	09.79'	17.98'	1.65' (TO FACE)

NOTE: BEARINGS TO REFERENCE OBJECTS ARE MAGNETIC-DISTANCES ARE TO A NAIL W/A DELTA COUNTY REFERENCE TAG, UNLESS OTHERWISE NOTED.

Signed by M.P. Davis Date 3/1/99  
Surveyor's Michigan License No. 16926